



## Plan Vivo Report



29<sup>th</sup> September 2011

Prepared by: Anko Stilma  
SICIREC BOLIVIA Ltda

[www.arbolivia.org](http://www.arbolivia.org)      [www.sicirec-bolivia.org](http://www.sicirec-bolivia.org)  
Casilla 6511, Cochabamba, Bolivia, [info@arbolivia.org](mailto:info@arbolivia.org)



## 1. Summary

<b>Reporting period</b>		2007-September 2011	
<b>Technical specifications in use</b>		Forest plantations	
<b>Area under management (ha)</b>	<b>Areas put under management since last report (ha)</b>	75.5 hectares	Not applicable
<b>Smallholders with <i>plan vivos</i> and PES agreements (total for project)</b>	<b>New smallholders with PES agreements since last report</b>	60 families	Not applicable
<b>Community groups with <i>plan vivos</i> and PES agreements (total)</b>	<b>New groups with PES agreements since last report</b>	The 60 families belong to 16 different communities	Not applicable
<b>PES made to communities to date (\$)</b>		22,673 USD approximately (158,712 BOB ) + 12,450 USD in materials	
<b>Plan Vivo Certificates issued to date</b>		Not applicable	
<b>Submission for Certificate Issuance for new areas under management (tCO<sub>2</sub>)</b>		19,164 tCO <sub>2</sub> e – 10% buffer = 17,248 For sale: 13,415 tCO <sub>2</sub> e	



## 2. Key Events, Developments and Challenges

### 2.1. From CDM to Plan Vivo

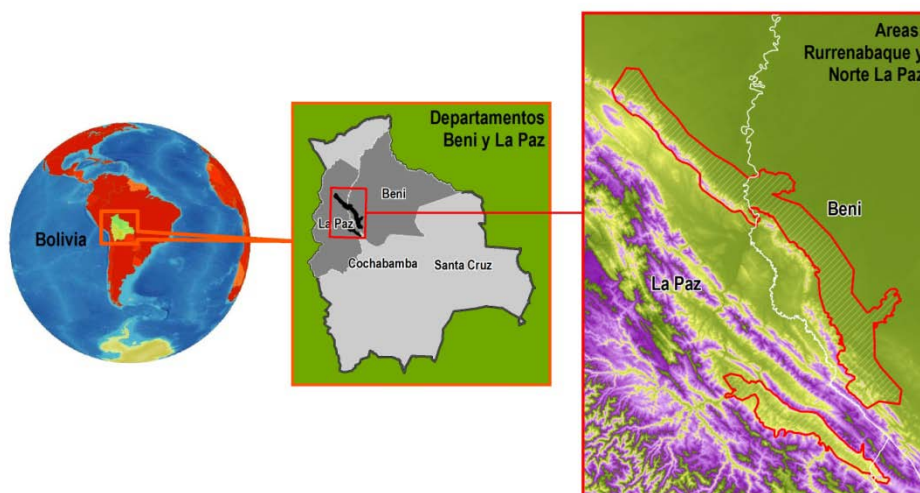
As stated in the PDD, the ArBolivia project started in 2007 as a portfolio of small scale reforestation activities within the Clean Development Mechanism of the UNFCCC. However due to a change of policy by the Bolivian government the project is now focusing on voluntary markets based on the Plan Vivo Standard.

A key challenge for the management of the ArBolivia project was the conversion of the project from a CDM project to a Project under the Plan Vivo Standard.

Key Events where of course the validation of the project against the Plan Vivo Standard in March 2011, and the registration of the project as a Plan Vivo project in May 2011.

The plantations reported here, are plantations planted in between 2008 and 2010 in the municipality of San Buenaventura , which is part of the so called “Rurrenabaque area” (see map) of the Arbolivia initiative. It is expected that the surface reported for Plan Vivo certification issuance, will be extended soon to the other areas mentioned in the PDD.

Figure 2.1: Location of the “Rurrenabaque” area



### 2.2 Developments and Challenges

- ArBolivia has had an agreement with the farmers’ federation (FESPAI) since 2008 and farmers’ participation was further improved by the creating 2 forestry committees in the area (more on this in the section 7, Ongoing Community Participation).



- In July 2010 there was an unusually cold period, followed by a dry period which caused forest fires in the natural forests and cropland and plantations were also damaged by these fires. This affected survival rates for the planted trees.
- The same cold spell also hindered the ripening of the seeds of the main species used for reforestation, leading to problems for replanting in these parcels. In July and August 2011 seed production from native species was excellent and replanting will be carried out by the end of this year. The areas with mortality over 20% are not reported for the issuance of Plan Vivo certificates in this report but will be reported once these plantations are successfully re-established.
- ArBolivia started with the implementation of permanent sample plots, measuring tree growth and evaluating quality criteria. At this moment 15 plots have been established.
- To meet the increasing demand of farmers who wish to participate in ArBolivia, Sicirec Bolivia Ltda. and its associates will put maximum effort into finding funds for the up-scaling of the project.
- Another challenge is controlling the cost of maintenance for the plantations whilst also guaranteeing the farmers their short term income. Additional to the woodlots ArBolivia distributed citrus and cacao trees to the participating farmers in order to cover part of their medium term needs and to introduce sustainable agroforestry production, which has higher biomass and ecological values than traditional cropping. ArBolivia started as well with the introduction of annual crops, such as beans, peanuts and other leguminous crops, which will result in lower maintenance costs for the farmers, and will provide revenues in the short term, making the Arbolivia concept even more attractive.
- With the same purpose, ArBolivia is exploring together with a micro-financing entity, the possibility of providing small loans to the participating farmers. These small farmers which cannot normally access small loans to improve their agricultural production, because they are unable to provide sufficient guarantees; will use the value of the trees as collateral. The loans will be provided in order to improve food and income security by improving agricultural practices through the introduction of organic cropping with higher biomass values.



### 3. Activities, total project size and participation

All activities are embedded in a proper land use planning system. One of the considerations for this is that the reforestation activities should not compete with food-security or short term income, neither should the reforestation activities result in the displacement of people, land-use activities or deforestation.

With proper planning land use can be improved, agriculture can be more efficient and the deforestation caused by traditional slash and burn methods, can be reduced.

Improved land use planning results in a lower rate of deforestation and higher levels of sustainability for the implemented project activities. The project is managed in order to improve the amount of biomass and ecological value not only on the tree planting sites but across the entire smallholding.

Apart from the introduction of Integrated Land Use Plans at individual farmer level, and the plantation activities as described in the Technical Specification, ArBolivia also introduces agro-forestry systems, which are more sustainable over time than rice, and will result in higher revenues per hectare, as well as higher revenues per working day.

The basic activity is the implementation of the wood-plantations. The basic requirement is the acceptance of the project approach by each farmer and their willingness to plant at least 1 hectare on eligible land, which means land which meets the requirements of the project and the Standards against which the project was validated.

Trees have only been planted on land deforested for over 10 years. Eligibility maps are available in ArcGIS and all potential planting sites are matched against these maps (see annex 1):

Land is eligible if:

- No forest cover currently exists.

And:

1. It can be shown in the satellite image that no forest cover existed 10 years ago
2. Where satellite image analysis is unable to demonstrate clearly whether if the particular area was deforested 10 years ago or not, the land owner signs a statement in which he or she declares that land was deforested more than 10 years ago This conforms with the eligibility tool for CDM-SSC-AR projects

The requirement to plant trees only on land deforested for over 10 years, means that for the region land is degraded or in process of degradation.

The areas reported in this report represent a surface of 75.5 hectares of which 71.7 hectares have been planted on land, which was previously used for annual cropping, 3.8 hectares was land with perennial crops.

The land use type “annual crops/fallow land”; is in practice mainly planted with rice, which after harvesting will be used for a few months more for maize and after that will become fallow land for several years. Since these lands have been part of such a system for a long time, they are becoming very



poor and no crop production can be expected for almost 10 years. ArBolivia aims to replace this slash and burn system with a land use system in which ecological principles prevail.

The 3.8 hectares of trees planted with perennial crops are all planted in areas where the perennial crops are in its final stage of production.

The integrated land use planning and the tree planting are based on the following principles:

- Selection of timber species according to ecological conditions of plant site and personal preferences of farm family
- Identification and selection of plant site surface according to estimated potential and available farm resources of farm family through elaboration of integral farm planning
- Adaptation of the forest implementation process according to the traditional agricultural calendar and adopted activities in order to avoid competition and additional preparation/ management expenses

In addition ArBolivia promoted and is promoting successive crop cultivation within implemented forestry plantations

- Improve biophysical conditions for tree growth within plantations through promotion of adequate use of natural generation within plantation
- Regular site visits to assure technical assistance to smallholder and impact monitoring on plantation quality and development.

In conformance with the Plan Vivo PDD and the Technical Specification all data collected on the condition of each site, is stored in paper files and in the ArBolivia database. Coordinates of the different land use types and the sectors in which trees are planted are stored in the database as well. Mapping is done using ArcGis. To improve transparency of the project activities for investors and for the clients for PES the database is coupled with the website on which all planted sites, under Plan Vivo and others are shown.

The principal stakeholders are the farmers and their communities. Considering the importance of syndicalism in Bolivia in general and within the project area in particular, acceptance by the community and coordination with community groups on different levels is of vital importance.

Therefore the following procedures have been and continue to be followed:

- i. Introducing the project idea to the federations and syndicate representatives, as well as local, departmental and national authorities. This resulted in signing agreements with the farmer organisation in this specific area: FESPAI. Joint activities and an interchange of information are carried out with FESPAI on a regular but informal base. On the other hand some of the participating communities are part of the Indigenous Territory of the Tacanas represented by CIPTA (Consejo Indigena del Pueblo Tacana), although still no formal agreement exists on the coordination of activities, staff from ArBolivia maintain communication with the authorities of the CIPTA by visiting them regularly
- ii. Introduction of the project idea to the communities in conjunction with the FESPAI
- iii. Identifying interested land holders within the communities
- iv. Visits to every individual interested landholder to establish
  - a. Requirements on land ownership
  - b. Acceptance of contract
  - c. Selection of eligible land within the farm
  - d. Biophysical evaluation of eligible area
  - e. Evaluation of actual and potential land use



- f. Collection of ideas on the design of the reforestation activities
- v. Documenting data in forms and on data base.
- vi. With the participating farmers, together with the communities and with the support of FESPAI two Forestry Committees have been established and it is expected that one extra Forestry Committee will be formed, due to the particular characteristics of those farmers who are part of the indigenous communities.

All documents mentioned above are stored in paper files as well in the data-base and are available on request.

This report includes the establishment of woodlots with 60 farmers. All farmers have signed an agreement which includes provision for the transfer of PES rights to the project, and the project in turn agrees to transfer the eventual revenues from these rights to the farmers as part of the investment on the farmers land. See table 3.1.

*Table 3.1: number of families participating in the ArBolivia initiative and surface planted per community*

Department	Municipality	Community	Farmer families (with agreement)	Surface planted (ha)
La Paz	San Buenaventura	25 de Mayo	8	7.8
La Paz	San Buenaventura	Bella Altura	2	2.5
La Paz	San Buenaventura	Buena Vista	3	3.5
La Paz	San Buenaventura	Capaina	2	2
La Paz	San Buenaventura	Cinteño	2	1.7
La Paz	San Buenaventura	Colorado	2	2
La Paz	San Buenaventura	Esmeralda	1	0.8
La Paz	San Buenaventura	Everest	2	1.4
La Paz	San Buenaventura	Hurehaupo	7	9.7
La Paz	San Buenaventura	La Esmeralda	1	0.75
La Paz	San Buenaventura	Mayge	1	5
La Paz	San Buenaventura	Nueva Palestina	2	2.4
La Paz	San Buenaventura	Pprivada	7	11.6
La Paz	San Buenaventura	San Isidro	4	5
La Paz	San Buenaventura	San Silvestre	5	5
La Paz	San Buenaventura	Santa Ana	5	8.5
La Paz	San Buenaventura	Tumupasa	6	5.85
<b>Total</b>			<b>60</b>	<b>75.5</b>

A surface of 71.7 hectares is planted on land which was used for annual cropping, 3.8 hectares was land with perennial crops in its last stage of production.

In the table 3.2, the species planted per strata are shown with the average carbon amount over a 40 year period. As stated in the PDD the buffer is 10% in accordance with Plan Vivo requirements. However ArBolivia will only sell 70% of the expected carbon stocks as ex-ante credits, which means ArBolivia will retain another 20% until the biomass measurements in the permanent sample plots are demonstrating the actual amounts of carbon stocks as estimated. Once biomass measurements demonstrate the exact carbon stock then the 20% credits which have been retained, can also be issued. In annex 2 the average amount of carbon per farmer and per sector is shown.





Table 3.2: Tree species planted and average carbon stocks

Strata	Specie	Surface (Ha)	Net average GHG removal (tCO <sub>2</sub> e/ha)	Total Net average GHG removal (tCO <sub>2</sub> e)	Plan Vivo Buffer (tCO <sub>2</sub> e)	Retained by ArBolivia (tCO <sub>2</sub> e)	Total ex - ante credits for sale (tCO <sub>2</sub> e)
Annual	Almendrillo	10.7	277	2,972	297	594	2,081
Annual	Palo María	1.2	215	254	25	51	178
Annual	Palo román	5.2	303	1,573	157	315	1,101
Annual	Palo yugo	0.7	263	187	19	37	131
Annual	Teca	43.5	249	10,827	1,083	2,165	7,579
Annual	Tejeyequé	8.0	231	1,846	185	369	1,292
Annual	Verdolago amarillo de ala	1.6	228	360	36	72	252
Annual	Verdolago negro (de ala)	0.3	278	70	7	14	49
Annual	Verdolago negro (pepa)	0.5	234	117	12	23	82
Perennial	Palo román	0.8	301	241	24	48	169
Perennial	Teca	2.0	247	482	48	96	337
Perennial	Tejeyequé	0.1	228	11	1	2	8
Perennial	Verdolago amarillo de ala	1.0	226	226	23	45	158
		75.5		19,164	1,916	3,833	13,415

As shown in table 3.3, certificate Issuance (ex-ante credits) is applied for a total of 13,415 CO<sub>2</sub>e, 10,033,5 tCO<sub>2</sub>e will be transferred Forest Finance and 3,381.3 will be transferred to the Cochabamba Project Ltd. In annex 2a to 2c details of the carbon allocated to Forest Finance and the Cochabamba Project Ltd is shown.

Table 3.3: Project CO<sub>2</sub> sales and allocations for this reporting period

Total volume of CO <sub>2</sub> forward sold (tCO <sub>2</sub> )	Total Sale Price (\$) <sup>1</sup>	Total number of producers/ producer groups allocated to buyers	Total area (ha)	Technical specification applied	Price to producer/ group (\$/tCO <sub>2</sub> ) <sup>2</sup>	% of Sale Price that will reach communities as PES*
10,034 tCO <sub>2</sub> e		42 (Forest Finance)	56.55	Forest Plantations	N/A (see section 6)	N/A
3,381 tCO <sub>2</sub> e	N/A	19 (The Cochabamba Project)	18.95	Forest Plantations	N/A (see section 6)	N/A

- Total number of farmers is 60, one farmer has three sectors, one assigned to Forest Finance and 2 are assigned to Cochabamba Project Ltd.

\*\* Please see for information on payments to farmers, section 6

<sup>1</sup> Pricing information will be removed before the report is made publicly available

<sup>2</sup> This information is used to assess whether the project benefit sharing structure is as laid out in the PDD. Please add an additional column to this table if there are additional payments to the community e.g. community trust fund.





## 4. Sales of Plan Vivo Certificates

There are no sales of Plan Vivo certificates over and above the amounts transferred above. **Of the sectors reported here under the Plan Vivo Standard no other environmental services are being transferred or will be transferred to third parties. This can be checked on request by the accredited certifier.**

## 5. Monitoring Results

Farmers received several visits before and after planting and during the maintenance of the trees.

All farmers receive instructions on how to plant and farmers also receive specific recommendations based on their specific site conditions, site-preparation (in case of establishment) and the quality of the plantation.

During site selection process, the coordinates of the future plantation were measured with GPS. The eligibility map was uploaded to the GPS, so GPS points could be matched directly against the eligibility map.

During the first two years 6 evaluation visits of the plantations are foreseen, after that this is reduced to one per year. In some cases, the number of evaluation visits planned during the first two years has had to be deferred because of delays by the farmer in proceeding with certain recommendations.

The visits are carried out according the following scheme:

1. During establishment process a number of recommendations are made. Compliance with these recommendations is checked 1 to 3 weeks after. Although during site selection the coordinates were measured by GPS the area finally planted was measured again, giving the exact coordinates (UTM WGS84) and surface of each sector. Once introduced into the data base a unique sector code is assigned (annex 1a). If the farmer has followed up the recommendations, the technical adviser is authorized to proceed with the payments, which are based on the surface area, as measured and recorded.
2. After about 3 months, a second evaluation takes place, farmers will receive recommendations on how to carry out the maintenance if they have not done so yet on their own initiative or have not done so according to the general instructions given to all farmers.
3. In the first year after planting two other evaluation visits are carried out (3 and 4 in table 5.1), with the same purpose as the visits mentioned above, and during the second year another two visits (5 and 6 in table 5.1) are carried out. After that period evaluations related to payments will be done only once a year.

In practice farmers are normally visited almost twice as frequently as the above mentioned formal visits. ArBolivia decided to register these visits as well, in order to have a more efficient follow up of the quality and compliance of activities related to the plantations.

The different recommendations are grouped and the surfaces for which each of the recommendations was given is summarized in table 5.1, for a full set of recommendations see annex 4. If no recommendations were given, the plantation was in compliance with the requirements of ArBolivia.



In the woodlots reported here all recommendations were followed up. Although it must be mentioned that this was not always done within the established time frame. Delays in the execution of activities by the farmers, or in cases where from a silvicultural point of view activities could be deferred without undue consequences, meant that in some cases only 4 payments were made during the two years.

- Cover crop: Due to soil conditions it is recommended to implement a leguminous crop, in which case appropriate seeds were provided by ArBolivia
- Pest control: Some pests, mainly ants might attack the plantations and there is a need to apply biological pesticides. These products were also provided by ArBolivia, or training was given on how to produce biological pesticides.
- Fertilization: Fertilization was recommended with organic fertilizer.
- No recommendation: No special recommendation were necessary
- Pruning required: Branches and shoots
- Protection against cattle: In case no fencing, or no sufficient fencing, was done before establishment, and due to land use changes (for example where one of the neighbours decided to begin raising cattle) fencing is necessary, ArBolivia provides a quantity of barbed wire. The farmer provides the poles and, and additional barbed wire as required.
- Replanting: In all cases when mortality exceeds 20%, replanting is recommended, ArBolivia provides the plants and the farmer carries out the planting.

*Table 5.1: Main recommendations during evaluation visits. Number 1-7: Different site visits over initial 2 year period. After 2 year period, visits are on annual basis. Full list of recommendations can be seen in annex 4.*

Type of Recommendation	Main recommendation of the visit (recomendations per hectare)						
	1	2	3	4	5	6	7
Cover crop	4.5						
Pest control	0.8	9.3	6.6	7.8	10.4	1.7	1.5
Fertilization				2.0			
Weeding	42.1	34.9	40.7	28.6	20.7	14.6	8.5
No recommendation	3.8	0.7	1.0				
Otros		0.5	0.5		2.1	1.1	
Pruning required	0.5	6.6	18.2	27.3	26.2	19.8	5.3
Protection against cattle	7.8	3.8		4.0			
Replanting (partly)	16.1	19.8	8.5	2.4	2.0		
No evaluation visit	0.0	0.0	0.0	3.5	14.2	38.4	60.2
<b>Total</b>	<b>75.5</b>	<b>75.5</b>	<b>75.5</b>	<b>75.5</b>	<b>75.5</b>	<b>75.5</b>	<b>75.5</b>

This data is checked on quality and data are verified in the field for consistency as described in the monitoring protocol.



## 6. PES update

In accordance with the PDD, the contract signed between the farmers and the project stipulates that the farmers will transfer their rights regarding the sale of carbon-credits to the Asociación Accidental Cetefor Sicirec (AACS). Sicirec Bolivia Ltda, the main partner in the AACS, will then transfer these rights to the investors in the project. The investors in turn will guarantee that the revenues they obtain for the carbon-credits will be transferred to the farmers as part of the total investment capital of the project. More specifically carbon revenues will be used to make staged payments to the farmers for the establishment and maintenance of plantations. The payments are made periodically in line with specific monitoring targets.

In accordance with the provisions established in the PDD, if these payments cannot be covered by the revenues for carbon credits, the project manager (SICIREC Bolivia Ltda) is obliged to cover the deficit. In the event that carbon revenues are higher than the partial payments then the surplus funds will be used for investments, which directly benefit the farmers, such as barbed wire, agroforestry plants etc.

Until now few Plan Vivo credits have been sold by the investor, which means payments to farmers until now are disbursed by the investor (SICIREC Group and IPS-Cochabamba Project Ltd).

The participating farmers received the payments shown in table 6.1

Table 6.1: Payments to farmers

Number of Farmers	Type of payment	Total Amount (BOB)	Total Amount USD (aprox.)
60	Establishment	47,712	6,816
60	Maintenance 1 (after aprox 3 months)	21,522	3,075
60	Maintenance 2 (after > 6 months)	24,291	3,470
55	Maintenance 3 (after >10 months)	24,785	3,541
48	Maintenance 4 (after > 14 months)	21,781	3,112
31	Maintenance 5 (after > 20 months)	13,189	1,884
13	Maintenance 6 (after > 26 months)	5,432	776
		158,712	22,673

*\*includes tax according Bolivian tax-regulations*

Payments amounting to the equivalent of 22,673 USD, besides farmers received citrus and cacao plants for a value of 8,900 USD, as well as seeds of leguminous species for a value of 150 USD, with the aim of improving the soil.

57 farmers received a total of 156 rolls of barbed wire with a value of 8,900 USD. Farmers receive barbed wire when there is a need to protect the young plantations against invasion by cattle.

60 farmers received agroforestry plants and 14 farmers received seeds for soil improvement. For a detail of the payments, and delivery of plants and seeds, see annex 3.



## 7. Ongoing Community Participation

The project has a high presence in the area, and works closely with the farmers. Partly by individual visits to the farmers, but also through the coordination with the farmer federation and the organisation of indigenous people. Communal and/or local organizational regulations, as well as verdicts, are mandatory for the project implementation according to their degree of authority. Therefore formal agreements with the FESPAI are established and a process of continuous coordination with the Council of Indigenous People Tacana (CIPTA) and community authorities is taking place.

With the authorisation and help of the farmer federation, 2 forestry committees have been set up. In the indigenous communities this role is taken up directly by the communities. The forestry committees, as well as the communities, play an active role in decision-, strategy-, and policymaking. In table 7.1 below the Forestry committees are shown for each community.

Table 7.1: Community, farmer organisation and Forestry Committees

Department	Municipality	Community		Forestry committee	Farmer families (with agreement)	Surface planted (ha)
La Paz	San Buenaventura	25 de Mayo	FESPAI	Gabú	8	7.8
La Paz	San Buenaventura	Bella Altura	CIPTA		2	2.5
La Paz	San Buenaventura	Buena Vista	CIPTA		3	3.5
La Paz	San Buenaventura	Capaina	CIPTA		2	2
La Paz	San Buenaventura	Cinteño	FESPAI	Madidi	2	1.7
La Paz	San Buenaventura	Colorado	FESPAI	Madidi	2	2
La Paz	San Buenaventura	Esmeralda	FESPAI	Gabú	1	0.8
La Paz	San Buenaventura	Everest	FESPAI	Gabú	2	1.4
La Paz	San Buenaventura	Hurehaupo	FESPAI	Madidi	7	9.7
La Paz	San Buenaventura	La Esmeralda	FESPAI	Gabú	1	0.75
La Paz	San Buenaventura	Mayge	FESPAI	Gabú	1	5
La Paz	San Buenaventura	Nueva Palestina	FESPAI	Gabú	2	2.4
La Paz	San Buenaventura	Propiedad privada*		Gabú/Madidi	7	11.6
La Paz	San Buenaventura	San Isidro	FESPAI	Gabú	4	5
La Paz	San Buenaventura	San Silvestre	CIPTA		5	5
La Paz	San Buenaventura	Santa Ana	FESPAI	Gabú	5	8.5
La Paz	San Buenaventura	Tumupasa	CIPTA	Gabú	6	5.85
<b>Total</b>					<b>60</b>	<b>75.5</b>
<i>*farmers which are not member of a specific community or organisation</i>						

These committees are organised according to their documented internal rules and procedures, which were approved during a meeting with all the farmers. All committees have a board of 4 members, of which 2 represents to ArBolivia a 2 to the communities. Board meetings take place at least every 2 months in which the members representing ArBolivia are giving an update of the situation on the executed and programmed activities and quality of the plantations. If there are any problems raised whereby ArBolivia has failed in its commitment to the farmer, these are discussed at this meeting. Similarly if there are farmers, who have been having problems in the plantations and these problems could not be solved between the farmer and the fieldworker, then a solution is sought in the committee and if necessary a visit with one of the farmer members of the board and the field worker is arranged to visit the parcel. In the general meeting board members representing the farmers inform the farmers on the results of the activities, measures taken and measures which should be taken, as well as all the strategies and activities programmed until the next meeting. Once a year, ArBolivia presents a financial and technical report to the forestry committees.



## 8. Breakdown of Operational Costs

The Plan Vivo parcels are part of the wider ArBolivia project. A cost estimation was made for the 75.5 ha based on the total expenses of the project. In Table 8.1 a cost specification is given.

Table 8.1 Breakdown of Operational Costs in USD<sup>3</sup>

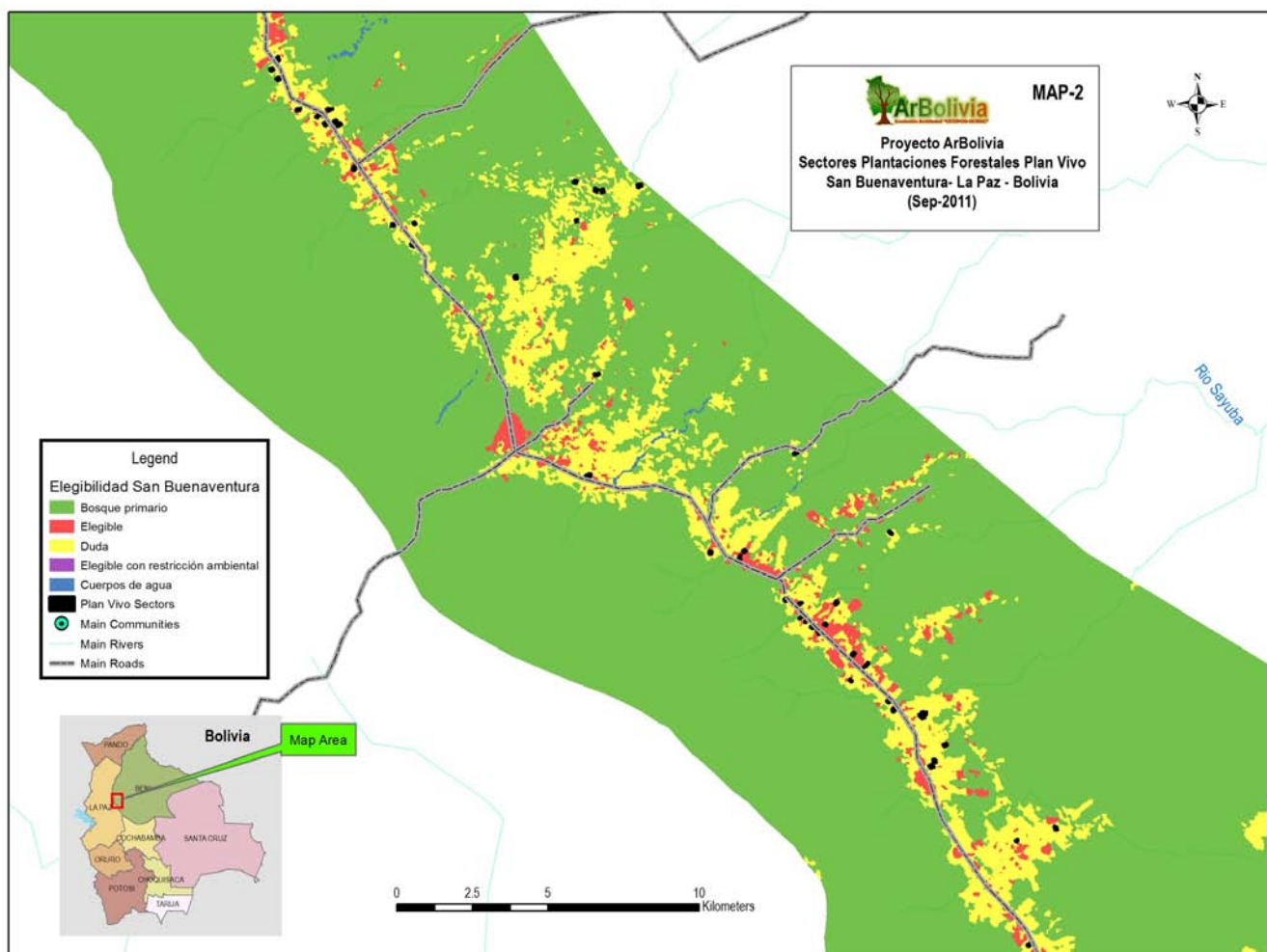
COST	ADM	MAN	CONS	MAINT	MON	PLANT	SOCIAL/INST	ESTABL	TOTAL
Personal	2,016	3,657	422	10,854	2,620	8,000	1,874	12,699	<b>42,144</b>
Operational costs	7,077	590	-	2,171	347	670	68	1,112	<b>12,036</b>
Materials and consumables	853	648	-	3,668	451	4,353	580	7,015	<b>17,569</b>
Equipment/Furniture	9,866	518	-	8,200	698	2,161	575	3,253	<b>25,271</b>
Agroforestry systems	-	-	-	184	264	2,314	106	794	<b>3,662</b>
Tools for farmers	-	-	-	-	-	-	-	9,410	<b>9,410</b>
Carbon and project development	-	133	850	-	-	-	-	-	<b>983</b>
Nursery materials	-	-	-	-	-	-	-	-	-
Seeds	-	-	-	-	-	4,043	-	-	<b>4,043</b>
Payments to farmers	-	-	-	20,733	-	4,399	-	6,817	<b>31,948</b>
Others (incl specific taxes)	665	-	-	-	-	-	-	-	<b>665</b>
<b>Total general</b>	<b>20,478</b>	<b>5,547</b>	<b>1,273</b>	<b>45,810</b>	<b>4,381</b>	<b>25,940</b>	<b>3,204</b>	<b>41,099</b>	<b>147,731</b>

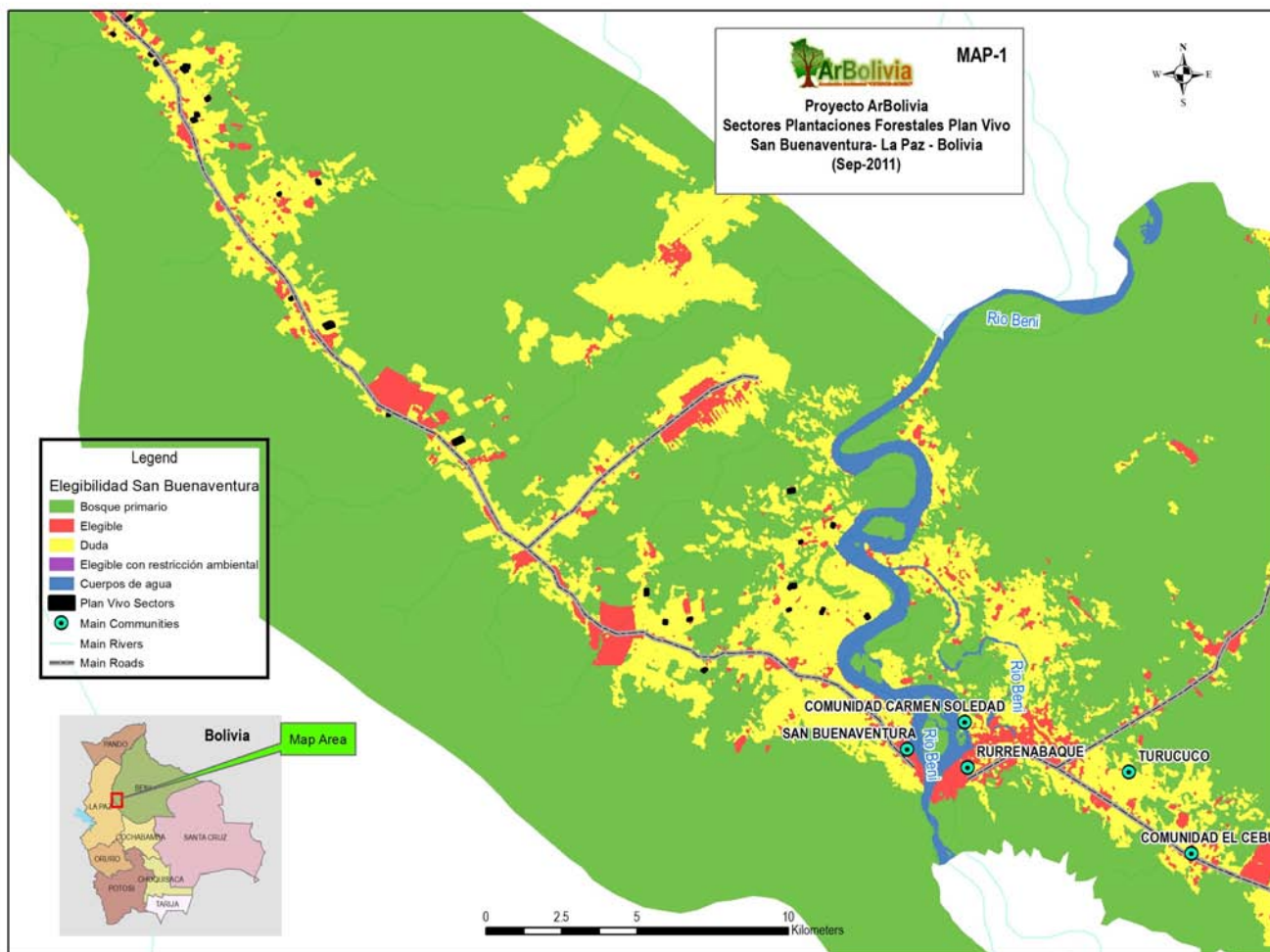
<sup>3</sup> ADM=Administration, MAN=Management, CONS=Consultancies, MAINT= Maintenance, MON=Monitoring, PLANT= Seedling production, SOCIAL/INST= Social and institucional strengthening, promotion, ESTABL=Establishment costs (exl seedlings)



## Appendix 1: Monitoring results for new plan vivos

Maps: Location of planting areas under Plan Vivo Standard







## Appendix 1a: Sector code and coordinates of each sector



**UTM-WGS84 coordinates of Plan Vivo forest parcels (z-19)**

Community	Farmers name	Unique Sector cod	X COOR	Y COOR
San Buenaventura - 25 DE MAYO	Andres Carmona Romero	LPZ-ITU-SBV-25M-03-S1-P1	630587	8430202
			630578	8430210
			630560	8430231
			630551	8430251
			630544	8430268
			630560	8430276
			630574	8430295
			630571	8430306
			630584	8430334
			630608	8430348
			630684	8430291
			630606	8430203
				Carlos Virginio Martinez Cabeza
629820	8429428			
629745	8429478			
629822	8429569			
	Gregorio Alcaraz	LPZ-ITU-SBV-25M-0003-S1-P1	632371	8427096
			632263	8427038
			632340	8426972
			632439	8427018
	Isabel Tarifa Gallardo de Rivero	LPZ-ITU-SBV-25M-08-S2-P1	629493	8429809
			629520	8429809
			629565	8429841
			629513	8429888
			629463	8429857
		LPZ-ITU-SBV-25M-08-S2-P2	629491	8429809
			629381	8429752
			629359	8429780
			629424	8429809
			629427	8429820
		LPZ-ITU-SBV-25M-08-S2-P3	629433	8429831
			629463	8429845
			629621	8429725
			629652	8429684
			629575	8429622
	Isidora Cano Carlos	LPZ-ITU-SBV-25M-004-S1-P1a	629550	8429626
			629567	8429673
			629597	8429711
			630185	8429554
			630243	8429630
			630283	8429607
			630289	8429564
630293	8429555			
	Justo Carmona Padilla	LPZ-ITU-SBV-25M-19-S1-P1	630274	8429542
			630295	8429526
			630271	8429512
			630240	8429527
			630027	8429223
			629947	8429401
			629976	8429417
	Pascual Rivera Carvajal	LPZ-ITU-SBV-25M-0005-S1-P1a	630093	8429257
			631133	8427673
			631095	8427645
			631024	8427723
	Victoriano Rivera Almazan	LPZ-ITU-SBV-25M-32-S1-P1	631066	8427752
			631571	8428182
			631551	8428191
			631469	8428094
			631478	8428088
			631556	8428186
			631593	8428167
			631684	8428281
			631683	8428293
			631663	8428301
			631571	8428182
	LPZ-ITU-SBV-25M-32-S1-P2	631544	8428194	

**UTM-WGS84 coordinates of Plan Vivo forest parcels (z-19)**

Community	Farmers name	Unique Sector_cod	X_COOR	Y_COOR
			631461	8428097
			631469	8428094
			631551	8428191
			631571	8428182
			631663	8428301
			631650	8428317
			631544	8428194
San Buenaventura - BELLA ALTURA	Abel Cartagena Silva	LPZ-ITU-SBV-BAT-09-S1-PV2	653450	8408698
			653403	8408662
			653380	8408643
			653395	8408626
			653406	8408610
			653499	8408669
			653471	8408693
	Felix Mamio Guamona	LPZ-ITU-SBV-BAT-01-S1-P1	653669	8409424
			653643	8409510
			653543	8409504
			653591	8409376
		LPZ-ITU-SBV-BAT-01-S2-P2	653509	8409494
			653545	8409442
			653458	8409341
			653410	8409383
			653452	8409445
San Buenaventura - BUENA VISTA	Alcides Serato Alvarez	LPZ-ITU-SBV-BNT-51-S1-P1	654838	8411425
			654872	8411534
			654951	8411483
			654914	8411384
	Humberto Leal Terrazas	LPZ-ITU-SBV-BNT-017-S4-P3	653778	8410901
			653802	8410922
			653857	8410956
			653874	8410910
			653828	8410880
			653792	8410855
	Jaime Duval Quetehuari	LPZ-ITU-SBV-BNT-19-S1-P1	653419	8412539
			653419	8412646
			653616	8412664
			653621	8412558
San Buenaventura - CAPAINA	Lorenzo Chau Quenebo	LPZ-ITU-SBV-COP-04-S1-P1	655958	8408465
			656018	8408371
			656102	8408430
			656031	8408515
	Luis Cartagena Mamio	LPZ-ITU-SBV-COP-03-S1-P1	654481	8408560
			654529	8408540
			654614	8408698
			654561	8408712
San Buenaventura - CINTEÑO	Alfredo Ramos Anachuri	LPZ-ITU-SBV-CIN-13-S2-P1	610485	8453270
			610539	8453288
			610552	8453226
			610646	8453278
			610657	8453224
			610524	8453169
	Genaro Portal Ortega	LPZ-ITU-SBV-CIN-04-S1-P1a	610636	8453165
			610592	8453158
			610572	8453130
			610593	8453071
			610657	8453083
		LPZ-ITU-SBV-CIN-04-S1-P1Bs	610616	8453016
			610573	8453004
			610581	8452983
			610627	8452995
San Buenaventura - COLORADO	Eloy Miranda Canaviri	LPZ-ITU-SBV-CLD-00-S1-P1	614661	8444600
			614588	8444651
			614690	8444755
			614727	8444702
	Flora Miranda Canaviri	LPZ-ITU-SBV-CLD-001-S1-P1	615992	8442835
			615979	8442753
			615872	8442741
			615897	8442847

**UTM-WGS84 coordinates of Plan Vivo forest parcels (z-19)**

Community	Farmers name	Unique Sector_cod	X_COOR	Y_COOR	
San Buenaventura - ESMERALDA 1	Evangelina Sejas De Peredo	LPZ-ITU-SBV-ESM-11-S1-P1a	637022	8419020	
			637071	8418996	
			637008	8418938	
			636978	8418988	
			636969	8418910	
		LPZ-ITU-SBV-ESM-11-S1-P2a	636919	8418960	
			636978	8418988	
			637008	8418938	
			<hr/>		
			San Buenaventura - Everest	Edgar Gonzales Callpa	LPZ-ITU-SBV-EVE-06-S1-P1
636617	8422444				
636615	8422407				
636565	8422373				
636521	8422410				
Juan Carlos Guizada Rios	LPZ-ITU-SBV-EVE-011-S1-P1a	637933			8422760
		637838			8422749
		637829			8422798
		637891			8422812
		637903			8422767
	LPZ-ITU-SBV-EVE-011-S1-P2	637924	8422777		
		637812	8422897		
		637832	8422898		
		637846	8422848		
		637910	8422857		
San Buenaventura - HUREHUAPO	Benito Quispe Catunta	LPZ-ITU-SBV-HUR-04-S1-P1	613696	8446066	
			613636	8446148	
			613723	8446205	
			613776	8446126	
			613776	8446116	
		LPZ-ITU-SBV-HUR-04-S2-P2	613723	8446205	
			613761	8446230	
			613812	8446151	
			<hr/>		
			Felipa Alanoca Huaycho	LPZ-ITU-SBV-HUR-46-S1-P1	613969
614060	8446276				
614100	8446235				
614086	8446223				
614103	8446202				
LPZ-ITU-SBV-HUR-46-S2-P2	614028	8446145			
	614113	8446037			
	614087	8446063			
	614080	8446090			
	614175	8446162			
Gumercindo Porco Collque	LPZ-ITU-SBV-HUR-46-S2-P3	614181	8446163		
		614192	8446170		
		614204	8446166		
		614208	8446152		
		614251	8446109		
	LPZ-ITU-SBV-HUR-02-S1-P1	614210	8446088		
		614072	8446143		
		614147	8446173		
		614146	8446152		
		614090	8446114		
Marcelino Churqui Juaniquina	LPZ-ITU-SBV-HUR-36-S1-P1	612893	8446660		
		612859	8446583		
		612732	8446574		
		612728	8446596		
		612746	8446603		
		612743	8446618		
		612751	8446637		
		<hr/>			
		Marcelino Churqui Juaniquina	LPZ-ITU-SBV-HUR-36-S1-P1	612081	8448222
				612021	8448237
612023	8448272				
612066	8448288				
612155	8448373				
612167	8448338				
612197	8448269				

**UTM-WGS84 coordinates of Plan Vivo forest parcels (z-19)**

Community	Farmers name	Unique Sector_cod	X_COOR	Y_COOR
			612118	8448195
	Serafin Flores Garcia	LPZ-ITU-SBV-HUR-12-S1-P1	612208	8447602
			612144	8447567
			612117	8447600
			612097	8447624
			612083	8447624
			612061	8447625
			612056	8447634
			612149	8447702
	Vicenta Martinez Torrez Vda. de Aveni	LPZ-ITU-SBV-HUR-08-S1-P2	611883	8447920
			611973	8447973
			611947	8448011
			611857	8447962
		LPZ-ITU-SBV-HUR-08-S1-P3	612002	8447928
			611973	8447973
			611883	8447920
			611912	8447875
	Victor Severo Huanca Quispe	LPZ-ITU-SBV-HUR-8-S1-P1	613560	8446506
			613615	8446459
			613548	8446416
			613497	8446462
		LPZ-ITU-SBV-HUR-8-S2-P2	613494	8446473
			613447	8446528
			613504	8446565
			613555	8446512
		LPZ-ITU-SBV-HUR-8-S5-P3	613378	8446374
			613434	8446420
			613487	8446379
			613436	8446327
San Buenaventura - LA ESMERALDA	Leonardo Ojeda Cori	LPZ-ITU-SBV-LEM-7-SL1-PL1	632395	8432557
			632328	8432623
			632359	8432663
			632435	8432592
		LPZ-ITU-SBV-LEM-7-SL2-PL2a	632395	8432558
			632436	8432524
			632471	8432556
			632435	8432592
San Buenaventura - MAYGE	Eulogio Rodriguez Ortega	LPZ-ITU-SBV-MAY-047-S1-P1	642385	8414116
			642312	8414249
			642523	8414347
			642595	8414210
		LPZ-ITU-SBV-MAY-047-S2-P2	642523	8414347
			642577	8414370
			642658	8414238
			642595	8414210
		LPZ-ITU-SBV-MAY-047-S2-P3	642580	8414370
			642612	8414390
			642688	8414255
			642658	8414237
San Buenaventura - NUEVA PALESTIN/	Elias Valdez	LPZ-ITU-SBV-NPL-02-S1-P1	629385	8430205
			629347	8430227
			629377	8430285
			629425	8430271
			629437	8430303
			629491	8430281
	Patrocinio Revollo Mejia	LPZ-ITU-SBV-NPL-14-S1-P2	627593	8431967
			627643	8432002
			627569	8432064
			627535	8432034
		LPZ-ITU-SBV-NPL-14-S1-P3	627555	8431940
			627593	8431967
			627535	8432034
			627496	8432010
		LPZ-ITU-SBV-NPL-14-S2-P5	627406	8431694
			627391	8431706
			627347	8431732
			627424	8431865
			627451	8431840

UTM-WGS84 coordinates of Plan Vivo forest parcels (z-19)

Community	Farmers name	Unique Sector_cod	X_COOR	Y_COOR
			627404	8431773
			627452	8431725
San Buenaventura - Propiedad privada: Alfredo Senzano Agramont		LPZ-ITU-SBV-SBP-30-S1-P1	640139	8415101
			640209	8415082
			640272	8415203
			640210	8415239
	German Martinez Torrez	LPZ-ITU-SBV-SBP-002-S3-P3	613801	8446559
			613743	8446635
			613812	8446670
			613840	8446627
			613942	8446650
			613947	8446638
	Juan Garcia Anabamba	LPZ-ITU-SBV-SBP-37-VS1-PV1	631136	8428619
			631102	8428579
			631174	8428529
			631211	8428571
		LPZ-ITU-SBV-SBP-37-VS2-PV2	631125	8428619
			631174	8428663
			631210	8428641
			631239	8428614
			631209	8428574
	Mariol Fessy Gonzales	LPZ-ITU-SBV-SBP-06-S1-P1	622328	8434519
			622355	8434515
			622330	8434460
			622301	8434472
		LPZ-ITU-SBV-SBP-06-S1-P2	622355	8434515
			622381	8434514
			622356	8434453
			622330	8434460
		LPZ-ITU-SBV-SBP-06-S1-P3	622407	8434509
			622387	8434450
			622356	8434453
			622381	8434514
		LPZ-ITU-SBV-SBP-06-S2-P4	622491	8434465
			622496	8434557
			622413	8434571
			622386	8434447
	Martin Laura Mamani	LPZ-ITU-SBV-SBP-004-S1-P1	626417	8432012
			626378	8431932
			626424	8431892
			626489	8431898
			626497	8431988
	Natalia Ticona De Chamizo	LPZ-ITU-SBV-SBP-022-S1-P1	638147	8417950
			638393	8418029
			638366	8418122
			638302	8418174
			638272	8418154
			638241	8418175
			638046	8418084
	Petrona Chao Amutari	LPZ-ITU-SBV-SBP-05-S1-P1	628940	8430452
			628864	8430383
			628919	8430312
			628999	8430382
San Buenaventura - SAN ISIDRO	Alicia Escobar Queteguari	LPZ-ITU-SBV-SID-25-S1-P1	648760	8409150
			648779	8409326
			648682	8409340
			648668	8409142
	Domingo Cuajera Ortiz	LPZ-ITU-SBV-SID-44-S1-P1	650209	8408324
			650212	8408410
			650092	8408387
			650083	8408316
	Marcelo Nahui Ilimuri	LPZ-ITU-SBV-SID-37-S1-P1	649306	8408273
			649392	8408262
			649384	8408211
			649288	8408225
		LPZ-ITU-SBV-SID-37-S1-P2	649309	8408330
			649394	8408318
			649392	8408262



**UTM-WGS84 coordinates of Plan Vivo forest parcels (z-19)**

Community	Farmers name	Unique Sector_cod	X_COOR	Y_COOR
			649306	8408273
	Maximiliana Emma Pacha Velasco	LPZ-ITU-SBV-SID-48-S1-P1	650550	8406668
			650642	8406726
			650728	8406699
			650629	8406606
San Buenaventura - SAN SILVESTRE	Carlos Antonio Ybaguari Quenevo	LPZ-ITU-SBV-SSR-02-S1-P1	622697	8443919
			622602	8443971
			622623	8444014
			622712	8443969
		LPZ-ITU-SBV-SSR-02-S1-P2	622681	8443873
			622592	8443926
			622602	8443971
			622697	8443919
	Estanislao Amutari Queteguari	LPZ-ITU-SBV-SSR-11-S1-P1	622852	8443848
			622891	8443871
			622849	8443969
			622808	8443949
		LPZ-ITU-SBV-SSR-11-S1-P2	622891	8443871
			622940	8443889
			622895	8443988
			622849	8443969
	Felcy Amutari Chao	LPZ-ITU-SBV-SSR-02-S1-P1a	622044	8442906
			622038	8442897
			621981	8442887
			621979	8442967
			622035	8442984
	Nelo Luis Quenevo Macuapa	LPZ-ITU-SBV-SSR-004-S1-P1	624053	8444077
			624141	8444063
			624172	8444068
			624170	8444150
			624062	8444158
		LPZ-ITU-SBV-SSR-004-S2-P2	624017	8444120
			624019	8444135
			624055	8444154
			624060	8444151
			624059	8444072
			624071	8444073
			624067	8444023
			624035	8444031
	Rolando Queteguari Ibguari	LPZ-ITU-SBV-SSR-001-S2-P2	621990	8444167
			621909	8444185
			621911	8444245
			622015	8444210
		LPZ-ITU-SBV-SSR-001-S2-P3	621932	8444238
			621955	8444292
			622038	8444259
			622012	8444210
San Buenaventura - SANTA ANA	Benito Aruquipa Trujillo	LPZ-ITU-SBV-STA-07-S1-P1	633404	8426578
			633417	8426676
			633498	8426680
			633508	8426650
			633602	8426668
			633599	8426574
		LPZ-ITU-SBV-STA-07-S2-P2	633464	8426442
			633549	8426474
			633527	8426568
			633428	8426566
		LPZ-ITU-SBV-STA-07-S2-P3	633464	8426442
			633428	8426566
			633356	8426588
			633325	8426569
			633444	8426426
	Elsa Ruiz Cespedes	LPZ-ITU-SBV-STA-50-S1-P1	632569	8426707
			632483	8426654
			632436	8426741
			632485	8426804
	Felix Condori Parapo	LPZ-ITU-SBV-STA-067-S1-P1	633812	8424829
			633745	8424931

**UTM-WGS84 coordinates of Plan Vivo forest parcels (z-19)**

Community	Farmers name	Unique Sector_cod	X_COOR	Y_COOR
			633668	8424892
			633729	8424804
		LPZ-ITU-SBV-STA-067-S1-P2	633847	8424840
			633784	8424944
			633745	8424931
			633812	8424829
	Martha Huarachi Ramos	LPZ-ITU-SBV-STA-065-S1-P1	634131	8425582
			634189	8425609
			634239	8425534
			634193	8425504
		LPZ-ITU-SBV-STA-065-S1-P2	634189	8425609
			634239	8425635
			634283	8425566
			634239	8425534
	Quintín Ticona Yañez	LPZ-ITU-SBV-STA-066-S1-P1	633812	8424983
			633914	8425010
			633881	8425103
			633802	8425103
San Buenaventura - TUMUPASA	Aquelina Valdez Chao	LPZ-ITU-SBV-TUM-14-S1-P1	628149	8435190
			628129	8435250
			628361	8435317
			628381	8435265
	Feliciano Medina Chamaro	LPZ-ITU-SBV-TUM-025-S2-P2	629328	8435290
			629353	8435241
			629250	8435183
			629213	8435171
			629196	8435222
			629251	8435270
			629271	8435250
			629289	8435272
			629298	8435294
			629315	8435304
	Juan Beyuma Chao	LPZ-ITU-SBV-TUM-10-S1-P1	622669	8437838
			622751	8437885
			622778	8437843
			622685	8437794
		LPZ-ITU-SBV-TUM-10-S1-P2	622621	8437794
			622665	8437825
			622623	8437883
			622594	8437836
			622588	8437857
			622602	8437841
	Macario Villca Poma	LPZ-ITU-SBV-TUM-003-S1-P1	620063	8441026
			619968	8441002
			619935	8441088
			619983	8441101
			619980	8441108
			620042	8441124
	Nestor Medina Gonzales	LPZ-ITU-SBV-TUM-13-S1-P1	616593	8442868
			616657	8442903
			616702	8442819
			616659	8442793
	Pedro Benito Marupa Macuapa	LPZ-ITU-SBV-TUM-03-S1-P1a	616578	8442221
			616519	8442148
			616574	8442101
			616645	8442160
		LPZ-ITU-SBV-TUM-03-S1-P1Bs	616659	8442130
			616623	8442104
			616610	8442090
			616623	8442072
			616673	8442104

## Appendix 2: Average Carbon Stock per farmer and per sector



## Annex 2: average Carbon Stock per farmer and per sector

Strata	Unique sector code	Farmers name	Tree specie planted	Surface planted (Ha)	tCO2e/ha	Total tCO2e	Not sold (buffer ArBolivia) tCO2e	Buffer Plan Vivo (tCO2e)	For Sale exante tCO2e
Annual	LPZ-ITU-SBV-25M-0003-S1-P1	Gregorio Alcaraz O.	Teca	1.0	249	249.0	49.8	24.9	174.3
Annual	LPZ-ITU-SBV-25M-0005-S1-P1a	Pascual Rivera Carvajal	Palo román	0.2	303	48.5	9.7	4.8	33.9
Annual			Teca	0.3	249	84.7	16.9	8.5	59.3
Annual	LPZ-ITU-SBV-25M-004-S1-P1a	Isidora Cano Carlos	Teca	0.7	249	174.3	34.9	17.4	122.0
Annual	LPZ-ITU-SBV-25M-018-S1-P1	Carlos Virginio Martinez Cabeza	Palo román	0.1	303	30.3	6.1	3.0	21.2
Annual			Teca	0.9	249	224.1	44.8	22.4	156.9
Annual	LPZ-ITU-SBV-25M-03-S1-P1	Andres Carmona Romero	Teca	1.1	249	261.5	52.3	26.1	183.0
Annual	LPZ-ITU-SBV-25M-08-S2-P1	Isabel Tarifa Gallardo de Rivero	Almendrillo	0.5	277	138.5	27.7	13.9	97.0
Annual	LPZ-ITU-SBV-25M-08-S2-P2	Isabel Tarifa Gallardo de Rivero	Tejeyeque	0.5	231	115.5	23.1	11.6	80.9
Annual	LPZ-ITU-SBV-25M-08-S2-P3	Isabel Tarifa Gallardo de Rivero	Tejeyeque	0.5	231	115.5	23.1	11.6	80.9
Annual	LPZ-ITU-SBV-25M-19-S1-P1	Justo Carmona Padilla	Almendrillo	1.0	277	277.0	55.4	27.7	193.9
Annual	LPZ-ITU-SBV-25M-32-S1-P1	Victoriano Rivera Almazan	Teca	0.5	249	124.5	24.9	12.5	87.2
Annual	LPZ-ITU-SBV-25M-32-S1-P2	Victoriano Rivera Almazan	Verdolago negro (pepa)	0.5	234	117.0	23.4	11.7	81.9
Annual	LPZ-ITU-SBV-BAT-01-S1-P1	Felix Mamio Guamona	Palo román	0.3	303	103.0	20.6	10.3	72.1
Annual			Palo yugo	0.2	263	52.6	10.5	5.3	36.8
Annual			Verdolago amarillo de ala	0.5	228	104.9	21.0	10.5	73.4
Annual	LPZ-ITU-SBV-BAT-01-S2-P2	Felix Mamio Guamona	Almendrillo	1.0	277	277.0	55.4	27.7	193.9
Annual	LPZ-ITU-SBV-BAT-09-S1-PV2	Abel Cartagena Silva	Palo María	0.5	215	107.5	21.5	10.8	75.3
Annual	LPZ-ITU-SBV-BNT-017-S4-P3	Humberto Leal Terrazas	Palo román	0.1	303	15.2	3.0	1.5	10.6
Annual			Palo yugo	0.5	263	118.4	23.7	11.8	82.8
Annual	LPZ-ITU-SBV-BNT-19-S1-P1	Jaime Duval Quetehuari	Tejeyeque	2.0	231	462.0	92.4	46.2	323.4
Annual	LPZ-ITU-SBV-BNT-51-S1-P1	Alcides Serato Alvarez	Teca	1.0	249	249.0	49.8	24.9	174.3
Annual	LPZ-ITU-SBV-CIN-04-S1-P1a	Genaro Portal Ortega	Teca	0.6	249	149.4	29.9	14.9	104.6
Annual	LPZ-ITU-SBV-CIN-04-S1-P1Bs	Genaro Portal Ortega	Teca	0.1	249	24.9	5.0	2.5	17.4
Annual	LPZ-ITU-SBV-CIN-13-S2-P1	Alfredo Ramos Anachuri	Teca	1.0	249	249.0	49.8	24.9	174.3
Annual	LPZ-ITU-SBV-CLD-001-S1-P1	Flora Miranda Canaviri	Teca	1.0	249	249.0	49.8	24.9	174.3
Annual	LPZ-ITU-SBV-CLD-00-S1-P1	Eloy Miranda Canaviri	Teca	1.0	249	249.0	49.8	24.9	174.3
Annual	LPZ-ITU-SBV-COP-03-S1-P1	Luis Cartagena Mamio	Palo yugo	0.1	263	15.8	3.2	1.6	11.0
Annual			Verdolago amarillo de ala	0.9	228	214.3	42.9	21.4	150.0
Annual	LPZ-ITU-SBV-EVE-011-S1-P1a	Juan Carlos Guizada Rios	Teca	0.4	249	99.6	19.9	10.0	69.7
Annual	LPZ-ITU-SBV-EVE-011-S1-P2	Juan Carlos Guizada Rios	Almendrillo	0.5	277	130.2	26.0	13.0	91.1
Annual	LPZ-ITU-SBV-EVE-06-S1-P1	Edgar Gonzales Callpa	Teca	0.5	249	124.5	24.9	12.5	87.2
Annual	LPZ-ITU-SBV-HUR-02-S1-P1	Gumercindo Porco Collque	Teca	1.0	249	249.0	49.8	24.9	174.3
Annual	LPZ-ITU-SBV-HUR-04-S1-P1	Benito Quispe Catunta	Teca	1.0	249	249.0	49.8	24.9	174.3
Annual	LPZ-ITU-SBV-HUR-04-S2-P2	Benito Quispe Catunta	Teca	0.5	249	124.5	24.9	12.5	87.2
Annual	LPZ-ITU-SBV-HUR-08-S1-P2	Vicenta Martinez Torrez Vda. de Avendaño	Almendrillo	0.5	277	138.5	27.7	13.9	97.0
Annual			Tejeyeque	-	231	-	-	-	-
Annual	LPZ-ITU-SBV-HUR-08-S1-P3	Vicenta Martinez Torrez Vda. de Avendaño	Palo román	0.2	303	51.5	10.3	5.2	36.1
Annual			Teca	0.3	249	82.2	16.4	8.2	57.5
Annual	LPZ-ITU-SBV-HUR-12-S1-P1	Serafin Flores Garcia	Teca	0.8	249	194.2	38.8	19.4	136.0
Annual			Tejeyeque	0.2	231	50.8	10.2	5.1	35.6

## Annex 2: average Carbon Stock per farmer and per sector

Strata	Unique sector code	Farmers name	Tree specie planted	Surface planted (Ha)	tCO2e/ha	Total tCO2e	Not sold (buffer ArBolivia) tCO2e	Buffer Plan Vivo (tCO2e)	For Sale exante tCO2e
Annual	LPZ-ITU-SBV-HUR-36-S1-P1	Marcelino Churqui Juaniquina	Teca	1.5	249	373.5	74.7	37.4	261.5
Annual	LPZ-ITU-SBV-HUR-46-S1-P1	Felipa Alanoca Huaycho	Teca	0.9	249	214.1	42.8	21.4	149.9
Annual			Tejeyequ	0.1	231	32.3	6.5	3.2	22.6
Annual	LPZ-ITU-SBV-HUR-46-S2-P2	Felipa Alanoca Huaycho	Almendrillo	0.9	277	235.5	47.1	23.5	164.8
Annual			Tejeyequ	0.2	231	34.7	6.9	3.5	24.3
Annual	LPZ-ITU-SBV-HUR-46-S2-P3	Felipa Alanoca Huaycho	Tejeyequ	0.2	231	46.2	9.2	4.6	32.3
Annual	LPZ-ITU-SBV-HUR-8-S1-P1	Victor Severo Huanca Quispe	Palo María	0.5	215	107.5	21.5	10.8	75.3
Annual	LPZ-ITU-SBV-HUR-8-S2-P2	Victor Severo Huanca Quispe	Palo román	0.1	303	30.3	6.1	3.0	21.2
Annual			Tejeyequ	0.4	231	92.4	18.5	9.2	64.7
Annual	LPZ-ITU-SBV-HUR-8-S5-P3	Victor Severo Huanca Quispe	Palo román	0.5	303	148.5	29.7	14.8	103.9
Annual	LPZ-ITU-SBV-LEM-7-SL1-PL1	Leonardo Ojeda Cori	Teca	0.5	249	124.5	24.9	12.5	87.2
Annual	LPZ-ITU-SBV-LEM-7-SL2-PL2a	Leonardo Ojeda Cori	Verdologo negro (de ala)	0.3	278	69.5	13.9	7.0	48.7
Annual	LPZ-ITU-SBV-MAY-047-S1-P1	Eulogio Rodriguez Ortega	Teca	3.5	249	871.5	174.3	87.2	610.1
Annual	LPZ-ITU-SBV-MAY-047-S2-P2	Eulogio Rodriguez Ortega	Teca	1.0	249	249.0	49.8	24.9	174.3
Annual	LPZ-ITU-SBV-MAY-047-S2-P3	Eulogio Rodriguez Ortega	Teca	0.1	249	22.4	4.5	2.2	15.7
Annual			Tejeyequ	0.4	231	94.7	18.9	9.5	66.3
Annual	LPZ-ITU-SBV-NPL-02-S1-P1	Elias Valdez	Almendrillo	0.6	277	166.2	33.2	16.6	116.3
Annual	LPZ-ITU-SBV-NPL-14-S2-P5	Patrocinio Revollo Mejia	Almendrillo	0.8	277	207.8	41.6	20.8	145.4
Annual			Palo román	0.0	303	9.1	1.8	0.9	6.4
Annual			Tejeyequ	0.0	231	4.6	0.9	0.5	3.2
Annual	LPZ-ITU-SBV-SBP-002-S3-P3	German Martinez Torrez	Almendrillo	1.0	277	277.0	55.4	27.7	193.9
Annual	LPZ-ITU-SBV-SBP-004-S1-P1	Martin Laura Mamani	Palo román	1.0	303	296.9	59.4	29.7	207.9
Annual			Tejeyequ	0.0	231	4.6	0.9	0.5	3.2
Annual	LPZ-ITU-SBV-SBP-022-S1-P1	Natalia Ticona De Chamizo	Teca	5.0	249	1,245.0	249.0	124.5	871.5
Annual	LPZ-ITU-SBV-SBP-05-S1-P1	Petrona Chao Amutari	Tejeyequ	1.0	231	231.0	46.2	23.1	161.7
Annual	LPZ-ITU-SBV-SBP-06-S1-P1	Mariol Fessy Gonzales	Palo román	0.2	303	66.7	13.3	6.7	46.7
Annual	LPZ-ITU-SBV-SBP-06-S1-P2	Mariol Fessy Gonzales	Verdologo amarillo de ala	0.2	228	41.0	8.2	4.1	28.7
Annual	LPZ-ITU-SBV-SBP-06-S1-P3	Mariol Fessy Gonzales	Teca	0.2	249	49.8	10.0	5.0	34.9
Annual	LPZ-ITU-SBV-SBP-06-S2-P4	Mariol Fessy Gonzales	Palo román	0.7	303	215.1	43.0	21.5	150.6
Annual			Teca	0.3	249	72.2	14.4	7.2	50.5
Annual	LPZ-ITU-SBV-SBP-37-VS1-PV1	Juan Garcia Anabamba	Palo román	0.5	303	151.5	30.3	15.2	106.1
Annual	LPZ-ITU-SBV-SBP-37-VS2-PV2	Juan Garcia Anabamba	Tejeyequ	0.5	231	115.5	23.1	11.6	80.9
Annual	LPZ-ITU-SBV-SID-25-S1-P1	Alicia Escobar Queteguari	Teca	2.0	249	498.0	99.6	49.8	348.6
Annual	LPZ-ITU-SBV-SID-37-S1-P1	Marcelo Nahui Ilimuri	Teca	0.5	249	124.5	24.9	12.5	87.2
Annual	LPZ-ITU-SBV-SID-37-S1-P2	Marcelo Nahui Ilimuri	Palo román	0.5	303	151.5	30.3	15.2	106.1
Annual	LPZ-ITU-SBV-SID-44-S1-P1	Domingo Cuajera Ortiz	Teca	1.0	249	249.0	49.8	24.9	174.3
Annual	LPZ-ITU-SBV-SID-48-S1-P1	Maximiliana Emma Pacha Velasco	Teca	1.0	249	249.0	49.8	24.9	174.3
Annual	LPZ-ITU-SBV-SSR-001-S2-P2	Rolando Queteguari Ibguari	Almendrillo	0.5	277	138.5	27.7	13.9	97.0
Annual	LPZ-ITU-SBV-SSR-001-S2-P3	Rolando Queteguari Ibguari	Tejeyequ	0.5	231	115.5	23.1	11.6	80.9
Annual	LPZ-ITU-SBV-SSR-004-S1-P1	Nelo Luis Quenevo Macuapa	Teca	0.8	249	204.2	40.8	20.4	142.9
Annual			Tejeyequ	0.2	231	41.6	8.3	4.2	29.1

## Annex 2: average Carbon Stock per farmer and per sector

Strata	Unique sector code	Farmers name	Tree specie planted	Surface planted (Ha)	tCO2e/ha	Total tCO2e	Not sold (buffer ArBolivia) tCO2e	Buffer Plan Vivo (tCO2e)	For Sale exante tCO2e
Annual	LPZ-ITU-SBV-SSR-004-S2-P2	Nelo Luis Quenevo Macuapa	Almendrillo	0.5	277	138.5	27.7	13.9	97.0
Annual	LPZ-ITU-SBV-SSR-02-S1-P1	Carlos Antonio Ybaguari Quenevo	Almendrillo	0.5	277	138.5	27.7	13.9	97.0
Annual	LPZ-ITU-SBV-SSR-02-S1-P1a	Felcy Amutari Chao	Teca	0.5	249	124.5	24.9	12.5	87.2
Annual	LPZ-ITU-SBV-SSR-02-S1-P2	Carlos Antonio Ybaguari Quenevo	Tejeyeque	0.5	231	115.5	23.1	11.6	80.9
Annual	LPZ-ITU-SBV-SSR-11-S1-P1	Estanislao Amutari Queteguari	Almendrillo	0.5	277	138.5	27.7	13.9	97.0
Annual	LPZ-ITU-SBV-SSR-11-S1-P2	Estanislao Amutari Queteguari	Tejeyeque	0.5	231	115.5	23.1	11.6	80.9
Annual	LPZ-ITU-SBV-STA-065-S1-P1	Martha Huarachi Ramos	Teca	0.5	249	124.5	24.9	12.5	87.2
Annual	LPZ-ITU-SBV-STA-065-S1-P2	Martha Huarachi Ramos	Palo román	0.0	303	12.1	2.4	1.2	8.5
Annual			Teca	0.5	249	114.5	22.9	11.5	80.2
Annual	LPZ-ITU-SBV-STA-066-S1-P1	Quintín Ticona Yañez	Teca	1.0	249	249.0	49.8	24.9	174.3
Annual	LPZ-ITU-SBV-STA-067-S1-P1	Felix Condori Parapo	Almendrillo	1.0	277	277.0	55.4	27.7	193.9
Annual	LPZ-ITU-SBV-STA-067-S1-P2	Felix Condori Parapo	Palo román	0.5	303	151.5	30.3	15.2	106.1
Annual	LPZ-ITU-SBV-STA-07-S1-P1	Benito Aruquipa Trujillo	Teca	2.0	249	498.0	99.6	49.8	348.6
Annual	LPZ-ITU-SBV-STA-07-S2-P2	Benito Aruquipa Trujillo	Teca	1.0	249	249.0	49.8	24.9	174.3
Annual	LPZ-ITU-SBV-STA-07-S2-P3	Benito Aruquipa Trujillo	Teca	1.0	249	249.0	49.8	24.9	174.3
Annual	LPZ-ITU-SBV-STA-50-S1-P1	Elsa Ruiz Cespedes	Teca	1.0	249	249.0	49.8	24.9	174.3
Annual	LPZ-ITU-SBV-TUM-003-S1-P1	Macario Villca Poma	Teca	1.0	249	249.0	49.8	24.9	174.3
Annual	LPZ-ITU-SBV-TUM-025-S2-P2	Feliciano Medina Chamaro	Almendrillo	1.0	277	277.0	55.4	27.7	193.9
Annual	LPZ-ITU-SBV-TUM-03-S1-P1a	Pedro Benito Marupa Macuapa	Almendrillo	0.1	277	16.6	3.3	1.7	11.6
Annual			Palo María	0.2	215	38.7	7.7	3.9	27.1
Annual			Teca	0.6	249	139.4	27.9	13.9	97.6
Annual	LPZ-ITU-SBV-TUM-03-S1-P1Bs	Pedro Benito Marupa Macuapa	Palo román	0.2	303	60.6	12.1	6.1	42.4
Annual	LPZ-ITU-SBV-TUM-10-S1-P1	Juan Beyuma Chao	Teca	0.5	249	124.5	24.9	12.5	87.2
Annual	LPZ-ITU-SBV-TUM-10-S1-P2	Juan Beyuma Chao	Tejeyeque	0.3	231	57.8	11.6	5.8	40.4
Annual	LPZ-ITU-SBV-TUM-13-S1-P1	Nestor Medina Gonzales	Teca	0.6	249	149.4	29.9	14.9	104.6
Annual	LPZ-ITU-SBV-TUM-14-S1-P1	Aquelina Valdez Chao	Palo román	0.1	303	30.3	6.1	3.0	21.2
Annual			Teca	1.4	249	348.6	69.7	34.9	244.0
Perennial	LPZ-ITU-SBV-COP-04-S1-P1	Lorenzo Chau Quenebo	Verdolago amarillo de ala	1.0	226	226.0	45.2	22.6	158.2
Perennial	LPZ-ITU-SBV-ESM-11-S1-P1a	Evangelina Sejas De Peredo	Teca	0.4	247	98.8	19.8	9.9	69.2
Perennial	LPZ-ITU-SBV-ESM-11-S1-P2a	Evangelina Sejas De Peredo	Palo román	0.4	301	120.4	24.1	12.0	84.3
Perennial	LPZ-ITU-SBV-NPL-14-S1-P2	Patrocinio Revollo Mejia	Teca	0.5	247	123.5	24.7	12.4	86.5
Perennial	LPZ-ITU-SBV-NPL-14-S1-P3	Patrocinio Revollo Mejia	Palo román	0.4	301	120.4	24.1	12.0	84.3
Perennial			Teca	0.1	247	12.4	2.5	1.2	8.6
Perennial			Tejeyeque	0.1	228	11.4	2.3	1.1	8.0
Perennial	LPZ-ITU-SBV-SBP-30-S1-P1	Alfredo Senzano Agramont	Teca	1.0	247	247.0	49.4	24.7	172.9
				75.5		19,164.0	3,832.8	1,916.4	13,414.8



Annex 2a: average Carbon Stock per farmer and per sector assigned to Forest Finance

Strata	Unique sector code	Farmers name	Tree specie planted	Surface planted (Ha)	tCO2e/ha	Total tCO2e	Not sold (buffer ArBolivia) tCO2e	Buffer Plan Vivo (tCO2e)	Assigned to Forest Finance (tCO2e)
Annual	LPZ-ITU-SBV-25M-0005-S1-P1a	Pascual Rivera Carvajal	Palo román	0.2	303	48.5	9.7	4.8	33.9
Annual			Teca	0.3	249	84.7	16.9	8.5	59.3
Annual	LPZ-ITU-SBV-BAT-01-S1-P1	Felix Mamio Guamona	Palo román	0.3	303	103.0	20.6	10.3	72.1
Annual			Palo yugo	0.2	263	52.6	10.5	5.3	36.8
Annual			Verdolago amarillo de ala	0.5	228	104.9	21.0	10.5	73.4
Annual	LPZ-ITU-SBV-BAT-01-S2-P2	Felix Mamio Guamona	Almendrillo	1.0	277	277.0	55.4	27.7	193.9
Annual	LPZ-ITU-SBV-BAT-09-S1-PV2	Abel Cartagena Silva	Palo María	0.5	215	107.5	21.5	10.8	75.3
Annual	LPZ-ITU-SBV-BNT-017-S4-P3	Humberto Leal Terrazas	Palo román	0.1	303	15.2	3.0	1.5	10.6
Annual			Palo yugo	0.5	263	118.4	23.7	11.8	82.8
Annual	LPZ-ITU-SBV-BNT-19-S1-P1	Jaime Duval Quetehuari	Tejeyeque	2.0	231	462.0	92.4	46.2	323.4
Annual	LPZ-ITU-SBV-BNT-51-S1-P1	Alcides Serato Alvarez	Teca	1.0	249	249.0	49.8	24.9	174.3
Annual	LPZ-ITU-SBV-CIN-04-S1-P1a	Genaro Portal Ortega	Teca	0.6	249	149.4	29.9	14.9	104.6
Annual	LPZ-ITU-SBV-CIN-04-S1-P1Bs	Genaro Portal Ortega	Teca	0.1	249	24.9	5.0	2.5	17.4
Annual	LPZ-ITU-SBV-CIN-13-S2-P1	Alfredo Ramos Anachuri	Teca	1.0	249	249.0	49.8	24.9	174.3
Annual	LPZ-ITU-SBV-CLD-001-S1-P1	Flora Miranda Canaviri	Teca	1.0	249	249.0	49.8	24.9	174.3
Annual	LPZ-ITU-SBV-CLD-00-S1-P1	Eloy Miranda Canaviri	Teca	1.0	249	249.0	49.8	24.9	174.3
Annual	LPZ-ITU-SBV-COP-03-S1-P1	Luis Cartagena Mamio	Palo yugo	0.1	263	15.8	3.2	1.6	11.0
Annual			Verdolago amarillo de ala	0.9	228	214.3	42.9	21.4	150.0
Annual	LPZ-ITU-SBV-EVE-011-S1-P1a	Juan Carlos Guizada Rios	Teca	0.4	249	99.6	19.9	10.0	69.7
Annual	LPZ-ITU-SBV-EVE-011-S1-P2	Juan Carlos Guizada Rios	Almendrillo	0.5	277	130.2	26.0	13.0	91.1
Annual			Cedro	0.0		-	-	-	-
Annual	LPZ-ITU-SBV-EVE-06-S1-P1	Edgar Gonzales Callpa	Teca	0.5	249	124.5	24.9	12.5	87.2
Annual	LPZ-ITU-SBV-HUR-02-S1-P1	Gumercindo Porco Collque	Teca	1.0	249	249.0	49.8	24.9	174.3
Annual	LPZ-ITU-SBV-HUR-04-S1-P1	Benito Quispe Catunta	Teca	1.0	249	249.0	49.8	24.9	174.3
Annual	LPZ-ITU-SBV-HUR-04-S2-P2	Benito Quispe Catunta	Teca	0.5	249	124.5	24.9	12.5	87.2
Annual	LPZ-ITU-SBV-HUR-08-S1-P2	Vicenta Martinez Torrez Vda. de	Almendrillo	0.5	277	138.5	27.7	13.9	97.0
Annual			Tejeyeque	-	231	-	-	-	-
Annual	LPZ-ITU-SBV-HUR-08-S1-P3	Vicenta Martinez Torrez Vda. de	Palo román	0.2	303	51.5	10.3	5.2	36.1
Annual			Teca	0.3	249	82.2	16.4	8.2	57.5
Annual	LPZ-ITU-SBV-HUR-12-S1-P1	Serafin Flores Garcia	Teca	0.8	249	194.2	38.8	19.4	136.0
Annual			Tejeyeque	0.2	231	50.8	10.2	5.1	35.6
Annual	LPZ-ITU-SBV-HUR-36-S1-P1	Marcelino Churqui Juaniquina	Teca	1.5	249	373.5	74.7	37.4	261.5
Annual	LPZ-ITU-SBV-HUR-46-S1-P1	Felipa Alanoca Huaycho	Teca	0.9	249	214.1	42.8	21.4	149.9
Annual			Tejeyeque	0.1	231	32.3	6.5	3.2	22.6
Annual	LPZ-ITU-SBV-HUR-46-S2-P2	Felipa Alanoca Huaycho	Almendrillo	0.9	277	235.5	47.1	23.5	164.8

Annex 2a: average Carbon Stock per farmer and per sector assigned to Forest Finance

Strata	Unique sector code	Farmers name	Tree specie planted	Surface planted (Ha)	tCO2e/ha	Total tCO2e	Not sold (buffer ArBolivia) tCO2e	Buffer Plan Vivo (tCO2e)	Assigned to Forest Finance (tCO2e)
Annual			Tejeyeque	0.2	231	34.7	6.9	3.5	24.3
Annual	LPZ-ITU-SBV-HUR-46-S2-P3	Felipa Alanoca Huaycho	Tejeyeque	0.2	231	46.2	9.2	4.6	32.3
Annual	LPZ-ITU-SBV-HUR-8-S1-P1	Victor Severo Huanca Quispe	Palo María	0.5	215	107.5	21.5	10.8	75.3
Annual	LPZ-ITU-SBV-HUR-8-S2-P2	Victor Severo Huanca Quispe	Palo román	0.1	303	30.3	6.1	3.0	21.2
Annual			Tejeyeque	0.4	231	92.4	18.5	9.2	64.7
Annual	LPZ-ITU-SBV-HUR-8-S5-P3	Victor Severo Huanca Quispe	Mara	0.0		-	-	-	-
Annual			Palo román	0.5	303	148.5	29.7	14.8	103.9
Annual	LPZ-ITU-SBV-MAY-047-S1-P1	Eulogio Rodriguez Ortega	Teca	3.5	249	871.5	174.3	87.2	610.1
Annual	LPZ-ITU-SBV-MAY-047-S2-P2	Eulogio Rodriguez Ortega	Teca	1.0	249	249.0	49.8	24.9	174.3
Annual	LPZ-ITU-SBV-MAY-047-S2-P3	Eulogio Rodriguez Ortega	Teca	0.1	249	22.4	4.5	2.2	15.7
Annual			Tejeyeque	0.4	231	94.7	18.9	9.5	66.3
Annual	LPZ-ITU-SBV-NPL-02-S1-P1	Elias Valdez	Almendrillo	0.6	277	166.2	33.2	16.6	116.3
Annual	LPZ-ITU-SBV-NPL-14-S2-P5	Patrocinio Revollo Mejia	Almendrillo	0.8	277	207.8	41.6	20.8	145.4
Annual			Palo román	0.0	303	9.1	1.8	0.9	6.4
Annual			Tejeyeque	0.0	231	4.6	0.9	0.5	3.2
Annual	LPZ-ITU-SBV-SBP-004-S1-P1	Martin Laura Mamani	Palo román	1.0	303	296.9	59.4	29.7	207.9
Annual			Tejeyeque	0.0	231	4.6	0.9	0.5	3.2
Annual	LPZ-ITU-SBV-SBP-022-S1-P1	Natalia Ticona De Chamizo	Teca	5.0	249	1,245.0	249.0	124.5	871.5
Annual	LPZ-ITU-SBV-SBP-05-S1-P1	Petrona Chao Amutari	Tejeyeque	1.0	231	231.0	46.2	23.1	161.7
Annual	LPZ-ITU-SBV-SBP-06-S1-P1	Mariol Fessy Gonzales	Palo román	0.2	303	66.7	13.3	6.7	46.7
Annual	LPZ-ITU-SBV-SBP-06-S1-P2	Mariol Fessy Gonzales	Verdolago amarillo de	0.2	228	41.0	8.2	4.1	28.7
Annual	LPZ-ITU-SBV-SBP-06-S1-P3	Mariol Fessy Gonzales	Teca	0.2	249	49.8	10.0	5.0	34.9
Annual	LPZ-ITU-SBV-SBP-06-S2-P4	Mariol Fessy Gonzales	Palo román	0.7	303	215.1	43.0	21.5	150.6
Annual			Teca	0.3	249	72.2	14.4	7.2	50.5
Annual	LPZ-ITU-SBV-SID-25-S1-P1	Alicia Escobar Queteguari	Teca	2.0	249	498.0	99.6	49.8	348.6
Annual	LPZ-ITU-SBV-SID-37-S1-P1	Marcelo Nahui Ilimuri	Teca	0.5	249	124.5	24.9	12.5	87.2
Annual	LPZ-ITU-SBV-SID-37-S1-P2	Marcelo Nahui Ilimuri	Palo román	0.5	303	151.5	30.3	15.2	106.1
Annual	LPZ-ITU-SBV-SID-44-S1-P1	Domingo Cuajera Ortiz	Teca	1.0	249	249.0	49.8	24.9	174.3
Annual	LPZ-ITU-SBV-SID-48-S1-P1	Maximiliana Emma Pacha Velasco	Teca	1.0	249	249.0	49.8	24.9	174.3
Annual	LPZ-ITU-SBV-SSR-001-S2-P2	Rolando Queteguari Ibguari	Almendrillo	0.5	277	138.5	27.7	13.9	97.0
Annual	LPZ-ITU-SBV-SSR-001-S2-P3	Rolando Queteguari Ibguari	Tejeyeque	0.5	231	115.5	23.1	11.6	80.9
Annual	LPZ-ITU-SBV-SSR-004-S1-P1	Nelo Luis Quenevo Macuapa	Teca	0.8	249	204.2	40.8	20.4	142.9
Annual			Tejeyeque	0.2	231	41.6	8.3	4.2	29.1
Annual	LPZ-ITU-SBV-SSR-004-S2-P2	Nelo Luis Quenevo Macuapa	Almendrillo	0.5	277	138.5	27.7	13.9	97.0
Annual	LPZ-ITU-SBV-SSR-02-S1-P1	Carlos Antonio Ybaguari Quenevo	Almendrillo	0.5	277	138.5	27.7	13.9	97.0
Annual	LPZ-ITU-SBV-SSR-02-S1-P1a	Felcy Amutari Chao	Teca	0.5	249	124.5	24.9	12.5	87.2
Annual	LPZ-ITU-SBV-SSR-02-S1-P2	Carlos Antonio Ybaguari Quenevo	Tejeyeque	0.5	231	115.5	23.1	11.6	80.9

Annex 2a: average Carbon Stock per farmer and per sector assigned to Forest Finance

Strata	Unique sector code	Farmers name	Tree specie planted	Surface planted (Ha)	tCO2e/ha	Total tCO2e	Not sold (buffer ArBolivia) tCO2e	Buffer Plan Vivo (tCO2e)	Assigned to Forest Finance (tCO2e)
Annual	LPZ-ITU-SBV-SSR-11-S1-P1	Estanislao Amutari Queteguari	Almendrillo	0.5	277	138.5	27.7	13.9	97.0
Annual	LPZ-ITU-SBV-SSR-11-S1-P2	Estanislao Amutari Queteguari	Tejeyeque	0.5	231	115.5	23.1	11.6	80.9
Annual	LPZ-ITU-SBV-STA-066-S1-P1	Quintin Ticona Yañez	Teca	1.0	249	249.0	49.8	24.9	174.3
Annual	LPZ-ITU-SBV-STA-067-S1-P1	Felix Condori Parapo	Almendrillo	1.0	277	277.0	55.4	27.7	193.9
Annual	LPZ-ITU-SBV-STA-067-S1-P2	Felix Condori Parapo	Palo román	0.5	303	151.5	30.3	15.2	106.1
Annual	LPZ-ITU-SBV-STA-07-S1-P1	Benito Aruquipa Trujillo	Teca	2.0	249	498.0	99.6	49.8	348.6
Annual	LPZ-ITU-SBV-STA-07-S2-P2	Benito Aruquipa Trujillo	Teca	1.0	249	249.0	49.8	24.9	174.3
Annual	LPZ-ITU-SBV-STA-07-S2-P3	Benito Aruquipa Trujillo	Teca	1.0	249	249.0	49.8	24.9	174.3
Annual	LPZ-ITU-SBV-STA-50-S1-P1	Elsa Ruiz Cespedes	Teca	1.0	249	249.0	49.8	24.9	174.3
Annual	LPZ-ITU-SBV-TUM-03-S1-P1a	Pedro Benito Marupa Macuapa	Almendrillo	0.1	277	16.6	3.3	1.7	11.6
Annual			Palo María	0.2	215	38.7	7.7	3.9	27.1
Annual			Teca	0.6	249	139.4	27.9	13.9	97.6
Annual	LPZ-ITU-SBV-TUM-03-S1-P1Bs	Pedro Benito Marupa Macuapa	Palo román	0.2	303	60.6	12.1	6.1	42.4
Annual	LPZ-ITU-SBV-TUM-10-S1-P1	Juan Beyuma Chao	Teca	0.5	249	124.5	24.9	12.5	87.2
Annual	LPZ-ITU-SBV-TUM-10-S1-P2	Juan Beyuma Chao	Tejeyeque	0.3	231	57.8	11.6	5.8	40.4
Total general				56.6		14,333.6	2,866.7	1,433.4	10,033.5

## Annex 2b: average Carbon Stock per farmer and per sector assigned to Cochabamba Project Ltda

Strata	Unique sector code	Farmers name	Tree specie planted	Surface planted (Ha)	tCO2e/ha	Total tCO2e	Not sold (buffer ArBolivia) tCO2e	Buffer Plan Vivo (tCO2e)	Assigned to Cochabamba Project (tCO2e)
Annual	LPZ-ITU-SBV-25M-0003-S1-P1	Gregorio Alcaraz O	Teca	1	249	249.0	49.8	24.9	174.3
Annual	LPZ-ITU-SBV-25M-004-S1-P1a	Isidora Cano Carlos	Teca	0.7	249	174.3	34.9	17.4	122.0
Annual	LPZ-ITU-SBV-25M-018-S1-P1	Carlos Virginio Martinez Cabeza	Palo román	0.1	303	30.3	6.1	3.0	21.2
Annual			Teca	0.9	249	224.1	44.8	22.4	156.9
Annual	LPZ-ITU-SBV-25M-03-S1-P1	Andres Carmona Romero	Cedro	0.02		-	-	-	-
Annual			Mara	0.03		-	-	-	-
Annual			Teca	1.05	249	261.5	52.3	26.1	183.0
Annual	LPZ-ITU-SBV-25M-08-S2-P1	Isabel Tarifa Gallardo de Rivero	Almendrillo	0.5	277	138.5	27.7	13.9	97.0
Annual	LPZ-ITU-SBV-25M-08-S2-P2	Isabel Tarifa Gallardo de Rivero	Tejeyequé	0.5	231	115.5	23.1	11.6	80.9
Annual	LPZ-ITU-SBV-25M-08-S2-P3	Isabel Tarifa Gallardo de Rivero	Tejeyequé	0.5	231	115.5	23.1	11.6	80.9
Annual	LPZ-ITU-SBV-25M-19-S1-P1	Justo Carmona Padilla	Almendrillo	1	277	277.0	55.4	27.7	193.9
Annual	LPZ-ITU-SBV-25M-32-S1-P1	Victoriano Rivera Almazan	Teca	0.5	249	124.5	24.9	12.5	87.2
Annual	LPZ-ITU-SBV-25M-32-S1-P2	Victoriano Rivera Almazan	Verdolago negro	0.5	234	117.0	23.4	11.7	81.9
Annual	LPZ-ITU-SBV-LEM-7-SL1-PL1	Leonardo Ojeda Cori	Teca	0.5	249	124.5	24.9	12.5	87.2
Annual	LPZ-ITU-SBV-LEM-7-SL2-PL2a	Leonardo Ojeda Cori	Verdolago negro	0.25	278	69.5	13.9	7.0	48.7
Annual	LPZ-ITU-SBV-SBP-002-S3-P3	German Martinez Torrez	Almendrillo	1	277	277.0	55.4	27.7	193.9
Annual	LPZ-ITU-SBV-SBP-37-VS1-PV1	Juan Garcia Anabamba	Palo román	0.5	303	151.5	30.3	15.2	106.1
Annual	LPZ-ITU-SBV-SBP-37-VS2-PV2	Juan Garcia Anabamba	Tejeyequé	0.5	231	115.5	23.1	11.6	80.9
Annual	LPZ-ITU-SBV-STA-065-S1-P1	Martha Huarachi Ramos	Teca	0.5	249	124.5	24.9	12.5	87.2
Annual	LPZ-ITU-SBV-STA-065-S1-P2	Martha Huarachi Ramos	Palo román	0.04	303	12.1	2.4	1.2	8.5
Annual			Teca	0.46	249	114.5	22.9	11.5	80.2
Annual	LPZ-ITU-SBV-TUM-003-S1-P1	Macario Villca Poma	Teca	1	249	249.0	49.8	24.9	174.3
Annual	LPZ-ITU-SBV-TUM-025-S2-P2	Feliciano Medina Chamaro	Almendrillo	1	277	277.0	55.4	27.7	193.9
Annual	LPZ-ITU-SBV-TUM-13-S1-P1	Nestor Medina Gonzales	Teca	0.6	249	149.4	29.9	14.9	104.6
Annual	LPZ-ITU-SBV-TUM-14-S1-P1	Aquelina Valdez Chao	Palo román	0.1	303	30.3	6.1	3.0	21.2
Annual			Teca	1.4	249	348.6	69.7	34.9	244.0
Perennial	LPZ-ITU-SBV-COP-04-S1-P1	Lorenzo Chau Quenebo	Verdolago amarillo	1	226	226.0	45.2	22.6	158.2
Perennial	LPZ-ITU-SBV-ESM-11-S1-P1a	Evangelina Sejas De Peredo	Teca	0.4	247	98.8	19.8	9.9	69.2
Perennial	LPZ-ITU-SBV-ESM-11-S1-P2a	Evangelina Sejas De Peredo	Palo román	0.4	301	120.4	24.1	12.0	84.3
Perennial	LPZ-ITU-SBV-NPL-14-S1-P2	Patrocinio Revollo Mejia	Teca	0.5	247	123.5	24.7	12.4	86.5
Perennial	LPZ-ITU-SBV-NPL-14-S1-P3	Patrocinio Revollo Mejia	Palo román	0.4	301	120.4	24.1	12.0	84.3
Perennial			Teca	0.05	247	12.4	2.5	1.2	8.6
Perennial			Tejeyequé	0.05	228	11.4	2.3	1.1	8.0
Perennial	LPZ-ITU-SBV-SBP-30-S1-P1	Alfredo Senzano Agramont	Teca	1	247	247.0	49.4	24.7	172.9
				18.95		4,830.5	966.1	483.0	3,381.3

## Appendix 3: Payments to farmers

### Annex 3: Payments in Bolivianos to farmers until 31 of august 2011

Community	Farmer familie	Establishment	Maint 1	Maint 2	Maint 3	Maint 4	Maint 5	Maint 6	Maint 7	Total payments	Total (incl tax)
25 de Mayo	Andres Carmona Romero	587	250	330	330	330	330	-	-	2,157	2,553
25 de Mayo	Carlos Virginio Martinez Cabeza	534	227	227	300	300	300	300	-	2,188	2,589
25 de Mayo	Gregorio Alcaraz O	534	227	300	300	300	-	-	-	1,661	1,966
25 de Mayo	Isabel Tarifa Gallardo de Rivero	801	341	450	450	450	300	-	-	2,792	3,304
25 de Mayo	Isidora Cano Carlos	374	159	159	210	210	210	-	-	1,322	1,564
25 de Mayo	Justo Carmona Padilla	534	227	227	300	300	300	300	-	2,188	2,589
25 de Mayo	Pascual Rivera Carvajal	267	150	150	-	-	-	-	-	567	671
25 de Mayo	Victoriano Rivera Almazan	534	227	227	300	300	300	300	-	2,188	2,589
Bella Altura	Abel Cartagena Silva	267	150	150	150	150	-	-	-	867	1,026
Bella Altura	Felix Mamio Guamona	1,068	527	600	600	600	-	-	-	3,395	4,018
Buena Vista	Alcides Serato Alvarez	534	227	300	300	300	-	-	-	1,661	1,966
Buena Vista	Humberto Leal Terrazas	267	150	150	-	-	-	-	-	567	671
Buena Vista	Jaime Duval Quetehuari	1,068	600	600	600	600	600	-	-	4,068	4,814
Capaina	Lorenzo Chau Quenebo	534	227	227	300	300	300	300	-	2,188	2,589
Capaina	Luis Cartagena Mamio	534	227	300	300	300	-	-	-	1,661	1,966
Cinteño	Alfredo Ramos Anachuri	534	227	300	300	300	-	-	-	1,661	1,966
Cinteño	Genaro Portal Ortega	374	159	210	210	210	210	-	-	1,373	1,624
Colorado	Eloy Miranda Canaviri	534	227	300	300	-	-	-	-	1,361	1,611
Colorado	Flora Miranda Canaviri	534	227	227	227	300	300	-	-	1,815	2,148
Esmeralda 1	Evangelina Sejas De Peredo	427	182	182	240	240	240	240	-	1,750	2,071
Everest	Edgar Gonzales Callpa	267	150	150	150	-	-	-	-	717	849
Everest	Juan Carlos Guizada Rios	481	204	270	270	270	-	-	-	1,495	1,769
Hurehuapo	Benito Quispe Catunta	801	341	377	377	450	450	300	-	3,096	3,663
Hurehuapo	Felipa Alanoca Huaycho	1,175	499	587	660	360	300	-	-	3,581	4,238
Hurehuapo	Gumerindo Porco Collque	534	227	300	300	300	300	-	-	1,961	2,321
Hurehuapo	Marcelino Churqui Juaniquina	801	341	341	341	450	450	450	-	3,173	3,754
Hurehuapo	Serafin Flores Garcia	534	227	227	300	300	300	300	-	2,188	2,589
Hurehuapo	Vicenta Martinez Torrez Vda. de Avendaño	534	227	300	300	300	150	-	-	1,811	2,143
Hurehuapo	Victor Severo Huanca Quispe	801	450	450	450	-	-	-	-	2,151	2,546
La Esmeralda	Leonardo Ojeda Cori	401	170	225	225	225	225	-	-	1,471	1,741
Mayge	Eulogio Rodriguez Ortega	2,670	1,135	1,245	1,245	1,500	1,500	1,050	-	10,344	12,241
Nueva Palestina	Elias Valdez	320	136	180	180	180	-	-	-	997	1,179
Nueva Palestina	Patrocinio Revollo Mejia	961	409	467	467	300	300	-	-	2,904	3,436
Propiedad Privada	Alfredo Senzano Agramont	534	227	300	300	300	300	-	-	1,961	2,321

### Annex 3: Payments in Bolivianos to farmers until 31 of august 2011

Community	Farmer familie	Establishment	Maint 1	Maint 2	Maint 3	Maint 4	Maint 5	Maint 6	Maint 7	Total payments	Total (incl tax)
Propiedad Privada	German Martinez Torrez	534	227	300	300	300	300	300	-	2,261	2,676
Propiedad Privada	Juan Garcia Anabamba	534	300	300	300	300	-	-	-	1,734	2,052
Propiedad Privada	Mariol Fessy Gonzales	854	363	436	480	480	180	-	-	2,794	3,306
Propiedad Privada	Martin Laura Mamani	534	227	227	300	300	-	-	-	1,588	1,879
Propiedad Privada	Natalia Ticona De Chamizo	2,670	1,135	1,135	1,500	1,500	-	-	-	7,940	9,396
Propiedad Privada	Petrona Chao Amutari	534	227	227	300	-	-	-	-	1,288	1,524
San Isidro	Alicia Escobar Queteguari	1,068	454	600	600	600	600	-	-	3,922	4,641
San Isidro	Domingo Cuajera Ortiz	534	227	227	227	300	300	300	-	2,115	2,503
San Isidro	Marcelo Nahui Ilimuri	534	227	227	300	300	300	150	-	2,038	2,412
San Isidro	Maximiliana Emma Pacha Velasco	534	227	300	300	300	300	-	-	1,961	2,321
San Silvestre	Carlos Antonio Ybaguari Quenevo	534	227	300	300	300	300	300	-	2,261	2,676
San Silvestre	Estanislao Amutari Queteguari	534	227	300	300	300	-	-	-	1,661	1,966
San Silvestre	Felcy Amutari Chao	267	114	150	150	150	-	-	-	831	983
San Silvestre	Nelo Luis Quenevo Macuapa	801	377	377	450	300	300	-	-	2,605	3,083
San Silvestre	Rolando Queteguari Ibguari	534	300	300	-	-	-	-	-	1,134	1,342
Santa Ana	Benito Aruquipa Trujillo	2,136	981	1,054	1,200	900	600	-	-	6,871	8,131
Santa Ana	Elsa Ruiz Cespedes	534	227	300	300	300	-	-	-	1,661	1,966
Santa Ana	Felix Condori Parapo	801	450	450	450	450	-	-	-	2,601	3,078
Santa Ana	Martha Huarachi Ramos	534	227	227	300	300	-	-	-	1,588	1,879
Santa Ana	Quintin Ticona Yañez	534	227	300	300	300	300	-	-	1,961	2,321
Tumupasa	Aquelina Valdez Chao	801	450	450	-	-	-	-	-	1,701	2,013
Tumupasa	Feliciano Medina Chamaro	534	227	300	300	300	-	-	-	1,661	1,966
Tumupasa	Juan Beyuma Chao	401	225	225	225	-	-	-	-	1,076	1,273
Tumupasa	Macario Villca Poma	534	227	300	300	-	-	-	-	1,361	1,611
Tumupasa	Nestor Medina Gonzales	320	180	180	180	-	-	-	-	860	1,018
Tumupasa	Pedro Benito Marupa Macuapa	534	227	300	300	-	-	-	-	1,361	1,611
<b>Total Payments</b>		<b>40,317</b>	<b>18,186</b>	<b>20,526</b>	<b>20,943</b>	<b>18,405</b>	<b>11,145</b>	<b>4,590</b>	<b>-</b>	<b>134,112</b>	<b>158,712</b>

### Annex 3a Barbwire deliverd to farmers

Comnty_name	Farmer_name	Lot_name	Barbwire (roles)
25 DE MAYO	Alcaraz O, Gregorio	LPZ-ITU-SBV-25M-0003-0-D0	2
	Cano Carlos, Isidora	LPZ-ITU-SBV-25M-004-0-D0	2
	Carmona Padilla, Justo	LPZ-ITU-SBV-25M-19-0-D0	2
	Carmona Romero, Andres	LPZ-ITU-SBV-25M-03-0-D0	
	Martinez Cabeza, Carlos Virginio	LPZ-ITU-SBV-25M-018-0-D0	2
	Rivera Almazan, Victoriano	LPZ-ITU-SBV-25M-32-0-D0	2
	Rivera Carvajal, Pascual	LPZ-ITU-SBV-25M-0005-0-D0	2
	Tarifa Gallardo de Rivero, Isabel	LPZ-ITU-SBV-25M-08-0-D0	4
BELLA ALTURA	Cartagena Silva, Abel	LPZ-ITU-SBV-BAT-09-0-D0	1
	Mamio Guamona, Felix	LPZ-ITU-SBV-BAT-01-0-D0	4
BUENA VISTA	Leal Terrazas, Humberto	LPZ-ITU-SBV-BNT-017-0-D0	2
	Serato Alvarez, Alcides	LPZ-ITU-SBV-BNT-51-0-D0	2
CAPAINA	Chau Quenebo, Lorenzo	LPZ-ITU-SBV-COP-04-0-D0	2
CINTEÑO	Portal Ortega, Genaro	LPZ-ITU-SBV-CIN-04-0-D0	2
	Ramos Anachuri, Alfredo	LPZ-ITU-SBV-CIN-13-0-D0	2
COLORADO	Miranda Canaviri, Eloy	LPZ-ITU-SBV-CLD-00-0-D0	4
	Miranda Canaviri, Flora	LPZ-ITU-SBV-CLD-001-0-D0	2
ESMERALDA 1	Sejas De Peredo, Evangelina	LPZ-ITU-SBV-ESM-11-0-D0	2
	Everest	Gonzales Callpa, Edgar	LPZ-ITU-SBV-EVE-06-0-D0
HUREHUAPO	Guizada Rios, Juan Carlos	LPZ-ITU-SBV-EVE-011-0-D0	2
	Alanoca Huaycho, Felipa	LPZ-ITU-SBV-HUR-46-0-D0	4
HUREHUAPO	Churqui Juaniquina, Marcelino	LPZ-ITU-SBV-HUR-36-0-D0	3
	Flores Garcia, Serafin	LPZ-ITU-SBV-HUR-12-0-D0	2
	Huanca Quispe, Victor Severo	LPZ-ITU-SBV-HUR-8-0-D0	3
	Martinez Torrez Vda. de Avendaño, Vicenta	LPZ-ITU-SBV-HUR-08-0-D0	3
	Porco Collque, Gumercindo	LPZ-ITU-SBV-HUR-02-0-D0	2
MAYGE	Quispe Catunta, Benito	LPZ-ITU-SBV-HUR-04-0-D0	3
	Rodriguez Ortega, Eulogio	LPZ-ITU-SBV-MAY-047-0-D0	10
NUEVA PALESTINA	Revollo Mejia, Patrocinio	LPZ-ITU-SBV-NPL-14-0-D0	4
	Valdez , Elias	LPZ-ITU-SBV-NPL-02-0-D0	1
Propiedad privada	Chao Amutari, Petrona	LPZ-ITU-SBV-SBP-05-0-D0	3
	Fessy Gonzales, Mariol	LPZ-ITU-SBV-SBP-06-0-D0	3
	Garcia Anabamba, Juan	LPZ-ITU-SBV-SBP-37-0-D0	
	Laura Mamani, Martin	LPZ-ITU-SBV-SBP-004-0-D0	2
	Martinez Torrez, German	LPZ-ITU-SBV-SBP-002-0-D0	6
	Senzano Agramont, Alfredo	LPZ-ITU-SBV-SBP-30-0-D0	2
	Ticona De Chamizo, Natalia	LPZ-ITU-SBV-SBP-022-0-D0	16
	SAN ISIDRO	Cuajera Ortiz, Domingo	LPZ-ITU-SBV-SID-44-0-D0
SAN ISIDRO	Escobar Queteguari, Alicia	LPZ-ITU-SBV-SID-25-0-D0	4
	Nahui Ilimuri, Marcelo	LPZ-ITU-SBV-SID-37-0-D0	4
	Pacha Velasco, Maximiliana Emma	LPZ-ITU-SBV-SID-48-0-D0	2
	SAN SILVESTRE	Amutari Chao, Felcy	LPZ-ITU-SBV-SSR-02-0-D0
SAN SILVESTRE	Amutari Queteguari, Estanislao	LPZ-ITU-SBV-SSR-11-0-D0	
	Quenevo Macuapa, Nelo Luis	LPZ-ITU-SBV-SSR-004-0-D0	2
	Queteguari Ibguari, Rolando	LPZ-ITU-SBV-SSR-001-0-D0	2
	Ybaguari Quenevo, Carlos Antonio	LPZ-ITU-SBV-SSR-02-0-D0	2
	SANTA ANA	Aruquipa Trujillo, Benito	LPZ-ITU-SBV-STA-07-0-D0
SANTA ANA	Condori Parapo, Felix	LPZ-ITU-SBV-STA-067-0-D0	2
	Huarachi Ramos, Martha	LPZ-ITU-SBV-STA-065-0-D0	2
	Ruiz Cespedes, Elsa	LPZ-ITU-SBV-STA-50-0-D0	2
	Ticona Yañez, Quintin	LPZ-ITU-SBV-STA-066-0-D0	2
TUMUPASA	Beyuma Chao, Juan	LPZ-ITU-SBV-TUM-10-0-D0	
	Marupa Macuapa, Pedro Benito	LPZ-ITU-SBV-TUM-03-0-D0	2
	Medina Chamaro, Feliciano	LPZ-ITU-SBV-TUM-025-0-D0	4
	Medina Gonzales, Nestor	LPZ-ITU-SBV-TUM-13-0-D0	1
	Valdez Chao, Aquelina	LPZ-ITU-SBV-TUM-14-0-D0	3
	Villca Poma, Macario	LPZ-ITU-SBV-TUM-003-0-D0	2
<b>Total</b>			<b>156</b>



## Annex 3B, delivery of Cacao and Citrus (number of plants)

Farmer_name	Lot_name	Cacao	Citrico
Alanoca Huaycho, Felipa	LPZ-ITU-SBV-HUR-46-0-D0		100
Alcaraz O, Gregorio	LPZ-ITU-SBV-25M-0003-0-D0		50
Amutari Chao, Felcy	LPZ-ITU-SBV-SSR-02-0-D0		50
Amutari Queteguari, Estanislao	LPZ-ITU-SBV-SSR-11-0-D0		50
Aruquipa Trujillo, Benito	LPZ-ITU-SBV-STA-07-0-D0		300
Beyuma Chao, Juan	LPZ-ITU-SBV-TUM-10-0-D0		35
Cano Carlos, Isidora	LPZ-ITU-SBV-25M-004-0-D0		50
Carmona Padilla, Justo	LPZ-ITU-SBV-25M-19-0-D0		50
Carmona Romero, Andres	LPZ-ITU-SBV-25M-03-0-D0		50
Cartagena Mamio, Luis	LPZ-ITU-SBV-COP-03-0-D0	50	50
Cartagena Silva, Abel	LPZ-ITU-SBV-BAT-09-0-D0		50
Chao Amutari, Petrona	LPZ-ITU-SBV-SBP-05-0-D0	200	0
Chau Quenebo, Lorenzo	LPZ-ITU-SBV-COP-04-0-D0		50
Churqui Juaniquina, Marcelino	LPZ-ITU-SBV-HUR-36-0-D0		75
Condori Parapo, Felix	LPZ-ITU-SBV-STA-067-0-D0		50
Cuajera Ortiz, Domingo	LPZ-ITU-SBV-SID-44-0-D0		50
Duval Quetehuari, Jaime	LPZ-ITU-SBV-BNT-19-0-D0		100
Escobar Queteguari, Alicia	LPZ-ITU-SBV-SID-25-0-D0		100
Fessy Gonzales, Mariol	LPZ-ITU-SBV-SBP-06-0-D0		75
Flores Garcia, Serafin	LPZ-ITU-SBV-HUR-12-0-D0		50
Garcia Anabamba, Juan	LPZ-ITU-SBV-SBP-37-0-D0		50
Gonzales Callpa, Edgar	LPZ-ITU-SBV-EVE-06-0-D0		25
Guizada Rios, Juan Carlos	LPZ-ITU-SBV-EVE-011-0-D0		50
Huanca Quispe, Victor Severo	LPZ-ITU-SBV-HUR-8-0-D0		75
Huarachi Ramos, Martha	LPZ-ITU-SBV-STA-065-0-D0		50
Laura Mamani, Martin	LPZ-ITU-SBV-SBP-004-0-D0		100
Leal Terrazas, Humberto	LPZ-ITU-SBV-BNT-017-0-D0		50
Mamio Guamona, Felix	LPZ-ITU-SBV-BAT-01-0-D0		75
Martinez Cabeza, Carlos Virginio	LPZ-ITU-SBV-25M-018-0-D0		50
Martinez Torrez Vda. de Avendaño, Vicenta	LPZ-ITU-SBV-HUR-08-0-D0		50
Martinez Torrez, German	LPZ-ITU-SBV-SBP-002-0-D0		150
Marupa Macuapa, Pedro Benito	LPZ-ITU-SBV-TUM-03-0-D0		50
Medina Chamaro, Feliciano	LPZ-ITU-SBV-TUM-025-0-D0		85
Medina Gonzales, Nestor	LPZ-ITU-SBV-TUM-13-0-D0		25
Miranda Canaviri, Eloy	LPZ-ITU-SBV-CLD-00-0-D0		50
Miranda Canaviri, Flora	LPZ-ITU-SBV-CLD-001-0-D0		50
Nahui Ilimuri, Marcelo	LPZ-ITU-SBV-SID-37-0-D0		100
Ojeda Cori, Leonardo	LPZ-ITU-SBV-LEM-7-0-D0		50
Pacha Velasco, Maximiliana Emma	LPZ-ITU-SBV-SID-48-0-D0		50
Porco Collque, Gumercindo	LPZ-ITU-SBV-HUR-02-0-D0		50
Portal Ortega, Genaro	LPZ-ITU-SBV-CIN-04-0-D0		50
Quenevo Macuapa, Nelo Luis	LPZ-ITU-SBV-SSR-004-0-D0		75
Queteguari Ibguari, Rolando	LPZ-ITU-SBV-SSR-001-0-D0		75
Quispe Catunta, Benito	LPZ-ITU-SBV-HUR-04-0-D0		75
Ramos Anachuri, Alfredo	LPZ-ITU-SBV-CIN-13-0-D0		50
Revollo Mejia, Patrocinio	LPZ-ITU-SBV-NPL-14-0-D0	100	215
Rivera Almazan, Victoriano	LPZ-ITU-SBV-25M-32-0-D0		50
Rivera Carvajal, Pascual	LPZ-ITU-SBV-25M-0005-0-D0		50
Rodriguez Ortega, Eulogio	LPZ-ITU-SBV-MAY-047-0-D0		250
Ruiz Cespedes, Elsa	LPZ-ITU-SBV-STA-50-0-D0		50
Sejas De Peredo, Evangelina	LPZ-ITU-SBV-ESM-11-0-D0		50
Senzano Agramont, Alfredo	LPZ-ITU-SBV-SBP-30-0-D0		100
Serato Alvarez, Alcides	LPZ-ITU-SBV-BNT-51-0-D0		50
Tarifa Gallardo de Rivero, Isabel	LPZ-ITU-SBV-25M-08-0-D0		100
Ticona De Chamizo, Natalia	LPZ-ITU-SBV-SBP-022-0-D0		300
Ticona Yañez, Quintin	LPZ-ITU-SBV-STA-066-0-D0		50
Valdez , Elias	LPZ-ITU-SBV-NPL-02-0-D0		25
Valdez Chao, Aquelina	LPZ-ITU-SBV-TUM-14-0-D0		75
Villca Poma, Macario	LPZ-ITU-SBV-TUM-003-0-D0		50
Ybaguari Quenevo, Carlos Antonio	LPZ-ITU-SBV-SSR-02-0-D0		50
<b>Total</b>		<b>350</b>	<b>4410</b>

## Appendix 4: Evaluation results

As mentioned in section 5, for monitoring purposes different site visits are carried out before, during and after planting. After planting a evaluation visit to check the quality of the established plantation is carried out and during the first two years after planting another 5 visits will be carried out, after two years these visits will be reduced to visits once a year. During the visits recommendations are given which must be carried out by the farmer. Once recommended activities are carried out, project proceeds with a payment to the farmer.

The recommendation can be grouped as follow:

- Cover crop: Due to soil conditions it is recommended to implement a leguminous crop, in which case appropriate seeds were provided by ArBolivia
- Pest control: Some pests, mainly ants might attack the plantations and there is a need to apply biological pesticides. These products were also provided by ArBolivia, or training was given on how to produce biological pesticides.
- Fertilization: Fertilization was recommended with organic fertilizer.
- No recommendation: No special recommendation were necessary
- Pruning required: Branches and shoots
- Protection against cattle: In case no fencing, or no sufficient fencing, was done before establishment, and due to land use changes (for example where one of the neighbours decided to begin raising cattle) fencing is necessary, ArBolivia provides a quantity of barbed wire. The farmer provides the poles and, and additional barbed wire as required.
- Replanting: In all cases when mortality exceeds 20%, replanting is recommended, ArBolivia provides the plants and the farmer carries out the planting.

In this appendix the recommendations given to each farmer for his specific sector are given for each of the visits carried out. If no recommendations were given, the plantation was in compliance with the requirements of ArBolivia.

- Replanting: In all cases when mortality exceeds 20%, replanting is recommended, ArBolivia provides the plants and the farmer carries out the planting.

Results of Evaluation Visits: First Visit (Evaluation just after tree planting)

Farmer	Sector_cod	First evaluation							
		Cover crop	Pest control	Weeding	No recomdation	Pruning	Protect. against cattle	Re-planting (partial)	Total
Abel Cartagena Silva	LPZ-ITU-SBV-BAT-09-S1-PV2			0.5					0.5
Alcides Serato Alvarez	LPZ-ITU-SBV-BNT-51-S1-P1							1.0	1.0
Alfredo Ramos Anachuri	LPZ-ITU-SBV-CIN-13-S2-P1	1.0							1.0
Alfredo Senzano Agramont	LPZ-ITU-SBV-SBP-30-S1-P1			1.0					1.0
Alicia Escobar Queteguari	LPZ-ITU-SBV-SID-25-S1-P1			2.0					2.0
Andres Carmona Romero	LPZ-ITU-SBV-25M-03-S1-P1			1.1					1.1
Aquelina Valdez Chao	LPZ-ITU-SBV-TUM-14-S1-P1			1.5					1.5
Benito Aruquipa Trujillo	LPZ-ITU-SBV-STA-07-S1-P1							2.0	2.0
	LPZ-ITU-SBV-STA-07-S2-P2							1.0	1.0
	LPZ-ITU-SBV-STA-07-S2-P3						1.0		1.0
Benito Quispe Catunta	LPZ-ITU-SBV-HUR-04-S1-P1	1.0							1.0
	LPZ-ITU-SBV-HUR-04-S2-P2			0.5					0.5
Carlos Antonio Ybaquari Quenevo	LPZ-ITU-SBV-SSR-02-S1-P1			0.5					0.5
	LPZ-ITU-SBV-SSR-02-S1-P2			0.5					0.5
Carlos Virginio Martinez Cabeza	LPZ-ITU-SBV-25M-018-S1-P1							1.0	1.0
Domingo Cuajera Ortiz	LPZ-ITU-SBV-SID-44-S1-P1			1.0					1.0
Edgar Gonzales Callpa	LPZ-ITU-SBV-EVE-06-S1-P1						0.5		0.5
Elias Valdez	LPZ-ITU-SBV-NPL-02-S1-P1			0.6					0.6
Eloy Miranda Canaviri	LPZ-ITU-SBV-CLD-00-S1-P1	1.0							1.0
Elsa Ruiz Cespedes	LPZ-ITU-SBV-STA-50-S1-P1							1.0	1.0
Estanislao Amutari Queteguari	LPZ-ITU-SBV-SSR-11-S1-P1			0.5					0.5
	LPZ-ITU-SBV-SSR-11-S1-P2			0.5					0.5
Eulogio Rodriguez Ortega	LPZ-ITU-SBV-MAY-047-S1-P1			3.5					3.5
	LPZ-ITU-SBV-MAY-047-S2-P2						1.0		1.0
	LPZ-ITU-SBV-MAY-047-S2-P3						0.5		0.5
Evangelina Sejas De Peredo	LPZ-ITU-SBV-ESM-11-S1-P1a						0.4		0.4
	LPZ-ITU-SBV-ESM-11-S1-P2a						0.4		0.4
Felcy Amutari Chao	LPZ-ITU-SBV-SSR-02-S1-P1a	0.5							0.5
Feliciano Medina Chamaro	LPZ-ITU-SBV-TUM-025-S2-P2			1.0					1.0
Felipa Alanoca Huaycho	LPZ-ITU-SBV-HUR-46-S1-P1							1.0	1.0
	LPZ-ITU-SBV-HUR-46-S2-P2			1.0					1.0
	LPZ-ITU-SBV-HUR-46-S2-P3			0.2					0.2
Felix Condori Parapo	LPZ-ITU-SBV-STA-067-S1-P1			1.0					1.0
	LPZ-ITU-SBV-STA-067-S1-P2			0.5					0.5
Felix Mamio Guamona	LPZ-ITU-SBV-BAT-01-S1-P1							1.0	1.0
	LPZ-ITU-SBV-BAT-01-S2-P2						1.0		1.0
Flora Miranda Canaviri	LPZ-ITU-SBV-CLD-001-S1-P1							1.0	1.0
Genaro Portal Ortega	LPZ-ITU-SBV-CIN-04-S1-P1a			0.6					0.6
	LPZ-ITU-SBV-CIN-04-S1-P1Bs			0.1					0.1
German Martinez Torrez	LPZ-ITU-SBV-SBP-002-S3-P3			1.0					1.0
Gregorio Alcaraz O	LPZ-ITU-SBV-25M-0003-S1-P1			1.0					1.0
Gumerciendo Porco Collque	LPZ-ITU-SBV-HUR-02-S1-P1							1.0	1.0
Humberto Leal Terrazas	LPZ-ITU-SBV-BNT-017-S4-P3			0.5					0.5
Isabel Tarifa Gallardo de Rivero	LPZ-ITU-SBV-25M-08-S2-P1			0.5					0.5
	LPZ-ITU-SBV-25M-08-S2-P2			0.5					0.5
	LPZ-ITU-SBV-25M-08-S2-P3			0.5					0.5
Isidora Cano Carlos	LPZ-ITU-SBV-25M-004-S1-P1a			0.7					0.7
Jaime Duval Quetehuari	LPZ-ITU-SBV-BNT-19-S1-P1			2.0					2.0
Juan Beyuma Chao	LPZ-ITU-SBV-TUM-10-S1-P1			0.5					0.5
	LPZ-ITU-SBV-TUM-10-S1-P2								0.3
Juan Carlos Guizada Rios	LPZ-ITU-SBV-EVE-011-S1-P1a		0.3					0.4	0.4
	LPZ-ITU-SBV-EVE-011-S1-P2				0.5				0.5
Juan Garcia Anabamba	LPZ-ITU-SBV-SBP-37-VS1-PV1			0.5					0.5
	LPZ-ITU-SBV-SBP-37-VS2-PV2			0.5					0.5
Justo Carmona Padilla	LPZ-ITU-SBV-25M-19-S1-P1							1.0	1.0
Leonardo Ojeda Cori	LPZ-ITU-SBV-LEM-7-SL1-PL1					0.5			0.5
	LPZ-ITU-SBV-LEM-7-SL2-PL2a					0.3			0.3
Lorenzo Chau Quenebo	LPZ-ITU-SBV-COP-04-S1-P1							1.0	1.0
Luis Cartagena Mamio	LPZ-ITU-SBV-COP-03-S1-P1						1.0		1.0
Macario Vilca Poma	LPZ-ITU-SBV-TUM-003-S1-P1			1.0					1.0
Marcelino Churqui Juaniquina	LPZ-ITU-SBV-HUR-36-S1-P1				1.5				1.5
Marcelo Nahui Ilimuri	LPZ-ITU-SBV-SID-37-S1-P1							0.5	0.5
	LPZ-ITU-SBV-SID-37-S1-P2							0.5	0.5
Mariol Fessy Gonzales	LPZ-ITU-SBV-SBP-06-S1-P1			0.2					0.2
	LPZ-ITU-SBV-SBP-06-S1-P2			0.2					0.2
	LPZ-ITU-SBV-SBP-06-S1-P3			0.2					0.2
	LPZ-ITU-SBV-SBP-06-S2-P4			1.0					1.0
Martha Huarachi Ramos	LPZ-ITU-SBV-STA-065-S1-P1			0.5					0.5
	LPZ-ITU-SBV-STA-065-S1-P2			0.5					0.5
Martin Laura Mamani	LPZ-ITU-SBV-SBP-004-S1-P1			1.0					1.0
Maximiliana Emma Pacha Velasco	LPZ-ITU-SBV-SID-48-S1-P1							1.0	1.0
Natalia Ticona De Chamizo	LPZ-ITU-SBV-SBP-022-S1-P1			5.0					5.0
Nelo Luis Quenevo Macuapa	LPZ-ITU-SBV-SSR-004-S1-P1							1.0	1.0
	LPZ-ITU-SBV-SSR-004-S2-P2			0.5					0.5
Nestor Medina Gonzales	LPZ-ITU-SBV-TUM-13-S1-P1			0.6					0.6
Pascual Rivera Carvajal	LPZ-ITU-SBV-25M-0005-S1-P1a						0.5		0.5
Patrocino Revollo Mejia	LPZ-ITU-SBV-NPL-14-S1-P2						0.5		0.5
	LPZ-ITU-SBV-NPL-14-S1-P3							0.5	0.5
	LPZ-ITU-SBV-NPL-14-S2-P5			0.8					0.8
Pedro Benito Marupa Macuapa	LPZ-ITU-SBV-TUM-03-S1-P1a			0.8					0.8
	LPZ-ITU-SBV-TUM-03-S1-P1Bs							0.2	0.2
Petrona Chao Amutari	LPZ-ITU-SBV-SBP-05-S1-P1				1.0				1.0
Quintin Ticona Yañez	LPZ-ITU-SBV-STA-066-S1-P1						1.0		1.0
Rolando Queteguari Ibguari	LPZ-ITU-SBV-SSR-001-S2-P2			0.5					0.5
	LPZ-ITU-SBV-SSR-001-S2-P3					0.5			0.5
Serafin Flores Garcia	LPZ-ITU-SBV-HUR-12-S1-P1	1.0							1.0
Vicenta Martinez Torrez Vda. de Avendaño	LPZ-ITU-SBV-HUR-08-S1-P2			0.5					0.5
	LPZ-ITU-SBV-HUR-08-S1-P3			0.5					0.5
Victor Severo Huanca Quispe	LPZ-ITU-SBV-HUR-8-S1-P1		0.5						0.5
	LPZ-ITU-SBV-HUR-8-S2-P2			0.5					0.5
	LPZ-ITU-SBV-HUR-8-S5-P3			0.5					0.5
Victoriano Rivera Almazan	LPZ-ITU-SBV-25M-32-S1-P1			0.5					0.5
	LPZ-ITU-SBV-25M-32-S1-P2			0.5					0.5
Total general		4.5	0.8	42.1	3.8	0.5	7.8	16.1	75.5

Results of Evaluation Visits: Second Visit (3-4 months after establishment)

Farmer	Sector_cod	Cover crop	Pest control	Weeding	Second evaluation				Total	
					No recomdation	Pruning	Protection against cattle	Re-planting (partial)		
Abel Cartagena Silva	LPZ-ITU-SBV-BAT-09-S1-PV2			0.5					0.5	
Alcides Serato Alvarez	LPZ-ITU-SBV-BNT-51-S1-P1			1.0					1.0	
Alfredo Ramos Anachuri	LPZ-ITU-SBV-CIN-13-S2-P1			1.0					1.0	
Alfredo Senzano Agramont	LPZ-ITU-SBV-SBP-30-S1-P1						1.0		1.0	
Alicia Escobar Queteguari	LPZ-ITU-SBV-SID-25-S1-P1							2.0	2.0	
Andres Carmona Romero	LPZ-ITU-SBV-25M-03-S1-P1			1.1					1.1	
Aquelina Valdez Chao	LPZ-ITU-SBV-TUM-14-S1-P1			1.5					1.5	
Benito Aruquipa Trujillo	LPZ-ITU-SBV-STA-07-S1-P1			2.0					2.0	
	LPZ-ITU-SBV-STA-07-S2-P2					1.0			1.0	
	LPZ-ITU-SBV-STA-07-S2-P3					1.0			1.0	
Benito Quispe Catunta	LPZ-ITU-SBV-HUR-04-S1-P1			1.0					1.0	
	LPZ-ITU-SBV-HUR-04-S2-P2		0.5						0.5	
Carlos Antonio Ybarguari Quenevo	LPZ-ITU-SBV-SSR-02-S1-P1			0.5					0.5	
	LPZ-ITU-SBV-SSR-02-S1-P2			0.5					0.5	
Carlos Virginio Martinez Cabeza	LPZ-ITU-SBV-25M-018-S1-P1			1.0					1.0	
Domingo Cuajera Ortiz	LPZ-ITU-SBV-SID-44-S1-P1							1.0	1.0	
Edgar Gonzales Callpa	LPZ-ITU-SBV-EVE-06-S1-P1				0.5				0.5	
Elias Valdez	LPZ-ITU-SBV-NPL-02-S1-P1							0.6	0.6	
Eloy Miranda Canaviri	LPZ-ITU-SBV-CLD-00-S1-P1			1.0					1.0	
Elsa Ruiz Cespedes	LPZ-ITU-SBV-STA-50-S1-P1			1.0					1.0	
Estanislao Amutari Queteguari	LPZ-ITU-SBV-SSR-11-S1-P1			0.5					0.5	
	LPZ-ITU-SBV-SSR-11-S1-P2		0.5						0.5	
Eulogio Rodriguez Ortega	LPZ-ITU-SBV-MAY-047-S1-P1							3.5	3.5	
	LPZ-ITU-SBV-MAY-047-S2-P2			1.0					1.0	
	LPZ-ITU-SBV-MAY-047-S2-P3							0.5	0.5	
Evangelina Sejas De Peredo	LPZ-ITU-SBV-ESM-11-S1-P1a							0.4	0.4	
	LPZ-ITU-SBV-ESM-11-S1-P2a							0.4	0.4	
Felcy Amutari Chao	LPZ-ITU-SBV-SSR-02-S1-P1a				0.5				0.5	
Feliciano Medina Chamaro	LPZ-ITU-SBV-TUM-025-S2-P2			1.0					1.0	
Felipa Alanoca Huaycho	LPZ-ITU-SBV-HUR-46-S1-P1			1.0					1.0	
	LPZ-ITU-SBV-HUR-46-S2-P2			1.0					1.0	
	LPZ-ITU-SBV-HUR-46-S2-P3			0.2					0.2	
Felix Condori Parapo	LPZ-ITU-SBV-STA-067-S1-P1							1.0	1.0	
	LPZ-ITU-SBV-STA-067-S1-P2							0.5	0.5	
Felix Mamio Guamona	LPZ-ITU-SBV-BAT-01-S1-P1			1.0					1.0	
	LPZ-ITU-SBV-BAT-01-S2-P2			1.0					1.0	
Flora Miranda Canaviri	LPZ-ITU-SBV-CLD-001-S1-P1		1.0						1.0	
Genaro Portal Ortega	LPZ-ITU-SBV-CIN-04-S1-P1a			0.6					0.6	
	LPZ-ITU-SBV-CIN-04-S1-P1Bs			0.1					0.1	
German Martinez Torrez	LPZ-ITU-SBV-SBP-002-S3-P3			1.0					1.0	
Gregorio Alcaraz O	LPZ-ITU-SBV-25M-0003-S1-P1			1.0					1.0	
Gumercindo Porco Collque	LPZ-ITU-SBV-HUR-02-S1-P1							1.0	1.0	
Humberto Leal Terrazas	LPZ-ITU-SBV-BNT-017-S4-P3					0.5			0.5	
Isabel Tarifa Gallardo de Rivero	LPZ-ITU-SBV-25M-08-S2-P1			0.5					0.5	
	LPZ-ITU-SBV-25M-08-S2-P2						0.5		0.5	
	LPZ-ITU-SBV-25M-08-S2-P3						0.5		0.5	
Isidora Cano Carlos	LPZ-ITU-SBV-25M-004-S1-P1a			0.7					0.7	
Jaime Duval Quetehuari	LPZ-ITU-SBV-BNT-19-S1-P1			2.0					2.0	
Juan Beyuma Chao	LPZ-ITU-SBV-TUM-10-S1-P1			0.5					0.5	
	LPZ-ITU-SBV-TUM-10-S1-P2		0.3						0.3	
Juan Carlos Guizada Rios	LPZ-ITU-SBV-EVE-011-S1-P1a			0.4					0.4	
	LPZ-ITU-SBV-EVE-011-S1-P2							0.5	0.5	
Juan Garcia Anabamba	LPZ-ITU-SBV-SBP-37-VS1-PV1					0.5			0.5	
	LPZ-ITU-SBV-SBP-37-VS2-PV2			0.5					0.5	
Justo Carmona Padilla	LPZ-ITU-SBV-25M-19-S1-P1							1.0	1.0	
Leonardo Ojeda Cori	LPZ-ITU-SBV-LEM-7-SL1-PL1						0.5		0.5	
	LPZ-ITU-SBV-LEM-7-SL2-PL2a						0.3		0.3	
Lorenzo Chau Quenebo	LPZ-ITU-SBV-COP-04-S1-P1					1.0			1.0	
Luis Cartagena Mamio	LPZ-ITU-SBV-COP-03-S1-P1							1.0	1.0	
Macario Villca Poma	LPZ-ITU-SBV-TUM-003-S1-P1			1.0					1.0	
Marcelino Churqui Juaniquina	LPZ-ITU-SBV-HUR-36-S1-P1							1.5	1.5	
Marcelo Nahui Ilimuri	LPZ-ITU-SBV-SID-37-S1-P1							0.5	0.5	
	LPZ-ITU-SBV-SID-37-S1-P2							0.5	0.5	
Mariol Fessy Gonzales	LPZ-ITU-SBV-SBP-06-S1-P1							0.2	0.2	
	LPZ-ITU-SBV-SBP-06-S1-P2							0.2	0.2	
	LPZ-ITU-SBV-SBP-06-S1-P3					0.2			0.2	
	LPZ-ITU-SBV-SBP-06-S2-P4							1.0	1.0	
Martha Huarachi Ramos	LPZ-ITU-SBV-STA-065-S1-P1		0.5						0.5	
	LPZ-ITU-SBV-STA-065-S1-P2		0.5						0.5	
Martin Laura Mamani	LPZ-ITU-SBV-SBP-004-S1-P1			1.0					1.0	
Maximiliana Emma Pacha Velasco	LPZ-ITU-SBV-SID-48-S1-P1						1.0		1.0	
Natalia Ticona De Chamizo	LPZ-ITU-SBV-SBP-022-S1-P1		5.0						5.0	
Nelo Luis Quenevo Macuapa	LPZ-ITU-SBV-SSR-004-S1-P1			1.0					1.0	
	LPZ-ITU-SBV-SSR-004-S2-P2					0.5			0.5	
Nestor Medina Gonzales	LPZ-ITU-SBV-TUM-13-S1-P1					0.6			0.6	
Pascual Rivera Carvajal	LPZ-ITU-SBV-25M-0005-S1-P1a			0.5					0.5	
Patrocino Revollo Mejia	LPZ-ITU-SBV-NPL-14-S1-P2							0.5	0.5	
	LPZ-ITU-SBV-NPL-14-S1-P3							0.5	0.5	
	LPZ-ITU-SBV-NPL-14-S2-P5			0.8					0.8	
Pedro Benito Marupa Macuapa	LPZ-ITU-SBV-TUM-03-S1-P1a		0.8						0.8	
	LPZ-ITU-SBV-TUM-03-S1-P1Bs		0.2						0.2	
Petrona Chao Amutari	LPZ-ITU-SBV-SBP-05-S1-P1							1.0	1.0	
Quintin Ticona Yañez	LPZ-ITU-SBV-STA-066-S1-P1					1.0			1.0	
Rolando Queteguari Ibguari	LPZ-ITU-SBV-SSR-001-S2-P2			0.5					0.5	
	LPZ-ITU-SBV-SSR-001-S2-P3			0.5					0.5	
Serafin Flores Garcia	LPZ-ITU-SBV-HUR-12-S1-P1			1.0					1.0	
Vicenta Martinez Torrez Vda. de Avendaño	LPZ-ITU-SBV-HUR-08-S1-P2			0.5					0.5	
	LPZ-ITU-SBV-HUR-08-S1-P3							0.5	0.5	
Victor Severo Huanca Quispe	LPZ-ITU-SBV-HUR-8-S1-P1					0.5			0.5	
	LPZ-ITU-SBV-HUR-8-S2-P2			0.5					0.5	
	LPZ-ITU-SBV-HUR-8-S5-P3			0.5					0.5	
Victoriano Rivera Almazan	LPZ-ITU-SBV-25M-32-S1-P1			0.5					0.5	
	LPZ-ITU-SBV-25M-32-S1-P2			0.5					0.5	
Total general			9.3	34.9		1.2	6.6	3.8	19.8	75.5

Results of Evaluation Visits: Third Visit (6-8 months after establishment)

Farmer	Sector_cod	Pest control	Weeding	Third Evaluation			Re-planting (partial)	Total third visit
				No recomdation	Pruning	Protection against cattle		
Abel Cartagena Silva	LPZ-ITU-SBV-BAT-09-S1-PV2		0.5					0.5
Alicides Serato Alvarez	LPZ-ITU-SBV-BNT-51-S1-P1		1.0					1.0
Alfredo Ramos Anachuri	LPZ-ITU-SBV-CIN-13-S2-P1				1.0			1.0
Alfredo Senzano Agramont	LPZ-ITU-SBV-SBP-30-S1-P1			1.0				1.0
Alicia Escobar Queteguari	LPZ-ITU-SBV-SID-25-S1-P1		2.0					2.0
Andres Carmona Romero	LPZ-ITU-SBV-25M-03-S1-P1	1.1						1.1
Aquelina Valdez Chao	LPZ-ITU-SBV-TUM-14-S1-P1		1.5					1.5
Benito Aruquipa Trujillo	LPZ-ITU-SBV-STA-07-S1-P1		2.0					2.0
	LPZ-ITU-SBV-STA-07-S2-P2				1.0			1.0
	LPZ-ITU-SBV-STA-07-S2-P3				1.0			1.0
Benito Quispe Catunta	LPZ-ITU-SBV-HUR-04-S1-P1		1.0					1.0
	LPZ-ITU-SBV-HUR-04-S2-P2		0.5					0.5
Carlos Antonio Ybaguari Quenevo	LPZ-ITU-SBV-SSR-02-S1-P1	0.5						0.5
	LPZ-ITU-SBV-SSR-02-S1-P2	0.5						0.5
Carlos Virginio Martinez Cabeza	LPZ-ITU-SBV-25M-018-S1-P1		1.0					1.0
Domingo Cuajera Ortiz	LPZ-ITU-SBV-SID-44-S1-P1		1.0					1.0
Edgar Gonzales Callpa	LPZ-ITU-SBV-EVE-06-S1-P1					0.5		0.5
Elias Valdez	LPZ-ITU-SBV-NPL-02-S1-P1		0.6					0.6
Eloy Miranda Canaviri	LPZ-ITU-SBV-CLD-00-S1-P1				1.0			1.0
Elsa Ruiz Cespedes	LPZ-ITU-SBV-STA-50-S1-P1		1.0					1.0
Estanislaw Amutari Queteguari	LPZ-ITU-SBV-SSR-11-S1-P1				0.5			0.5
	LPZ-ITU-SBV-SSR-11-S1-P2				0.5			0.5
Eulogio Rodriguez Ortega	LPZ-ITU-SBV-MAY-047-S1-P1		3.5					3.5
	LPZ-ITU-SBV-MAY-047-S2-P2		1.0					1.0
	LPZ-ITU-SBV-MAY-047-S2-P3					0.5		0.5
Evangelina Sejas De Peredo	LPZ-ITU-SBV-ESM-11-S1-P1a				0.4			0.4
	LPZ-ITU-SBV-ESM-11-S1-P2a				0.4			0.4
Felcy Amutari Chao	LPZ-ITU-SBV-SSR-02-S1-P1a		0.5					0.5
Feliciano Medina Chamaro	LPZ-ITU-SBV-TUM-025-S2-P2				1.0			1.0
Felipa Alanoca Huaycho	LPZ-ITU-SBV-HUR-46-S1-P1		1.0					1.0
	LPZ-ITU-SBV-HUR-46-S2-P2		1.0					1.0
	LPZ-ITU-SBV-HUR-46-S2-P3		0.2					0.2
Felix Condori Parapo	LPZ-ITU-SBV-STA-067-S1-P1		1.0					1.0
	LPZ-ITU-SBV-STA-067-S1-P2		0.5					0.5
Felix Mamio Guamona	LPZ-ITU-SBV-BAT-01-S1-P1		1.0					1.0
	LPZ-ITU-SBV-BAT-01-S2-P2					1.0		1.0
Flora Miranda Canaviri	LPZ-ITU-SBV-CLD-001-S1-P1		1.0					1.0
Genaro Portal Ortega	LPZ-ITU-SBV-CIN-04-S1-P1a		0.6					0.6
	LPZ-ITU-SBV-CIN-04-S1-P1Bs		0.1					0.1
German Martinez Torrez	LPZ-ITU-SBV-SBP-002-S3-P3		1.0					1.0
Gregorio Alcaraz O	LPZ-ITU-SBV-25M-0003-S1-P1				1.0			1.0
Gumercindo Porco Collque	LPZ-ITU-SBV-HUR-02-S1-P1					1.0		1.0
Humberto Leal Terrazas	LPZ-ITU-SBV-BNT-017-S4-P3			0.5				0.5
Isabel Tarifa Gallardo de Rivero	LPZ-ITU-SBV-25M-08-S2-P1		0.5					0.5
	LPZ-ITU-SBV-25M-08-S2-P2		0.5					0.5
	LPZ-ITU-SBV-25M-08-S2-P3		0.5					0.5
Isidora Cano Carlos	LPZ-ITU-SBV-25M-004-S1-P1a				0.7			0.7
Jaime Duval Quetehuari	LPZ-ITU-SBV-BNT-19-S1-P1					2.0		2.0
Juan Beyuma Chao	LPZ-ITU-SBV-TUM-10-S1-P1		0.5					0.5
	LPZ-ITU-SBV-TUM-10-S1-P2				0.3			0.3
Juan Carlos Guizada Rios	LPZ-ITU-SBV-EVE-011-S1-P1a		0.4					0.4
	LPZ-ITU-SBV-EVE-011-S1-P2					0.5		0.5
Juan Garcia Anabamba	LPZ-ITU-SBV-SBP-37-VS1-PV1		0.5					0.5
	LPZ-ITU-SBV-SBP-37-VS2-PV2		0.5					0.5
Justo Carmona Padilla	LPZ-ITU-SBV-25M-19-S1-P1		1.0					1.0
Leonardo Ojeda Cori	LPZ-ITU-SBV-LEM-7-SL1-PL1		0.5					0.5
	LPZ-ITU-SBV-LEM-7-SL2-PL2a				0.3			0.3
Lorenzo Chau Quenebo	LPZ-ITU-SBV-COP-04-S1-P1				1.0			1.0
Luis Cartagena Mamio	LPZ-ITU-SBV-COP-03-S1-P1		1.0					1.0
Macario Vilca Poma	LPZ-ITU-SBV-TUM-003-S1-P1		1.0					1.0
Marcelino Churqui Juaniquina	LPZ-ITU-SBV-HUR-36-S1-P1		1.5					1.5
Marcelo Nahui Ilimuri	LPZ-ITU-SBV-SID-37-S1-P1		0.5					0.5
	LPZ-ITU-SBV-SID-37-S1-P2					0.5		0.5
Mariol Fessy Gonzales	LPZ-ITU-SBV-SBP-06-S1-P1		0.2					0.2
	LPZ-ITU-SBV-SBP-06-S1-P2		0.2					0.2
	LPZ-ITU-SBV-SBP-06-S1-P3				0.2			0.2
	LPZ-ITU-SBV-SBP-06-S2-P4	1.0						1.0
Martha Huarachi Ramos	LPZ-ITU-SBV-STA-065-S1-P1				0.5			0.5
	LPZ-ITU-SBV-STA-065-S1-P2		0.5					0.5
Martin Laura Mamani	LPZ-ITU-SBV-SBP-004-S1-P1		1.0					1.0
Maximiliana Emma Pacha Velasco	LPZ-ITU-SBV-SID-48-S1-P1				1.0			1.0
Natalia Ticona De Chamizo	LPZ-ITU-SBV-SBP-022-S1-P1				5.0			5.0
Nelo Luis Quenevo Macuapa	LPZ-ITU-SBV-SSR-004-S1-P1					1.0		1.0
	LPZ-ITU-SBV-SSR-004-S2-P2		0.5					0.5
Nestor Medina Gonzales	LPZ-ITU-SBV-TUM-13-S1-P1		0.6					0.6
Pascual Rivera Carvajal	LPZ-ITU-SBV-25M-0005-S1-P1a		0.5					0.5
Patrocinio Revollo Mejia	LPZ-ITU-SBV-NPL-14-S1-P2		0.5					0.5
	LPZ-ITU-SBV-NPL-14-S1-P3		0.5					0.5
	LPZ-ITU-SBV-NPL-14-S2-P5		0.8					0.8
Pedro Benito Marupa Macuapa	LPZ-ITU-SBV-TUM-03-S1-P1a		0.8					0.8
	LPZ-ITU-SBV-TUM-03-S1-P1Bs		0.2					0.2
Petrona Chao Amutari	LPZ-ITU-SBV-SBP-05-S1-P1				1.0			1.0
Quintín Ticona Yañez	LPZ-ITU-SBV-STA-066-S1-P1		1.0					1.0
Rolando Queteguari Ibguari	LPZ-ITU-SBV-SSR-001-S2-P2					0.5		0.5
	LPZ-ITU-SBV-SSR-001-S2-P3					0.5		0.5
Serafin Flores Garcia	LPZ-ITU-SBV-HUR-12-S1-P1		1.0					1.0
Vicenta Martinez Torrez Vda. de Avendaño	LPZ-ITU-SBV-HUR-08-S1-P2					0.5		0.5
	LPZ-ITU-SBV-HUR-08-S1-P3	0.5						0.5
Victor Severo Huanca Quispe	LPZ-ITU-SBV-HUR-8-S1-P1		0.5					0.5
	LPZ-ITU-SBV-HUR-8-S2-P2		0.5					0.5
	LPZ-ITU-SBV-HUR-8-S5-P3		0.5					0.5
Victoriano Rivera Almazan	LPZ-ITU-SBV-25M-32-S1-P1		0.5					0.5
	LPZ-ITU-SBV-25M-32-S1-P2				0.5			0.5
Total general		6.6	40.7	1.5	18.2		8.5	75.5

Results of Evaluation Visits: Fourth Visit

(Normally 3 months after last visit, but this might differ a bit, depending on results of former visit)

Farmer	Sector_cod	Pest control	Fertilizing	Weeding	Fourth Evaluation			Total 4
					Pruning	Protection against cattle	Re-planting (partial)	
Abel Cartagena Silva	LPZ-ITU-SBV-BAT-09-S1-PV2			0.5				0.5
Alcides Serato Alvarez	LPZ-ITU-SBV-BNT-51-S1-P1			1.0				1.0
Alfredo Ramos Anachuri	LPZ-ITU-SBV-CIN-13-S2-P1			1.0				1.0
Alfredo Senzano Agramont	LPZ-ITU-SBV-SBP-30-S1-P1			1.0				1.0
Alicia Escobar Queteguari	LPZ-ITU-SBV-SID-25-S1-P1				2.0			2.0
Andres Carmona Romero	LPZ-ITU-SBV-25M-03-S1-P1			1.1				1.1
Aquelina Valdez Chao	LPZ-ITU-SBV-TUM-14-S1-P1							
Benito Aruquipa Trujillo	LPZ-ITU-SBV-STA-07-S1-P1		2.0					2.0
	LPZ-ITU-SBV-STA-07-S2-P2				1.0			1.0
	LPZ-ITU-SBV-STA-07-S2-P3				1.0			1.0
Benito Quispe Catunta	LPZ-ITU-SBV-HUR-04-S1-P1				1.0			1.0
	LPZ-ITU-SBV-HUR-04-S2-P2			0.5				0.5
Carlos Antonio Ybaguari Quenevo	LPZ-ITU-SBV-SSR-02-S1-P1				0.5			0.5
	LPZ-ITU-SBV-SSR-02-S1-P2				0.5			0.5
Carlos Virginio Martinez Cabeza	LPZ-ITU-SBV-25M-018-S1-P1				1.0			1.0
Domingo Cuajera Ortiz	LPZ-ITU-SBV-SID-44-S1-P1				1.0			1.0
Edgar Gonzales Callpa	LPZ-ITU-SBV-EVE-06-S1-P1			0.5				0.5
Elias Valdez	LPZ-ITU-SBV-NPL-02-S1-P1			0.6				0.6
Eloy Miranda Canaviri	LPZ-ITU-SBV-CLD-00-S1-P1			1.0				1.0
Elsa Ruiz Cespedes	LPZ-ITU-SBV-STA-50-S1-P1					1.0		1.0
Estanislao Amutari Queteguari	LPZ-ITU-SBV-SSR-11-S1-P1			0.5				0.5
	LPZ-ITU-SBV-SSR-11-S1-P2				0.5			0.5
Eulogio Rodriguez Ortega	LPZ-ITU-SBV-MAY-047-S1-P1					3.5		3.5
	LPZ-ITU-SBV-MAY-047-S2-P2			1.0				1.0
	LPZ-ITU-SBV-MAY-047-S2-P3			0.5				0.5
Evangelina Sejas De Peredo	LPZ-ITU-SBV-ESM-11-S1-P1a			0.4				0.4
	LPZ-ITU-SBV-ESM-11-S1-P2a			0.4				0.4
Felcy Amutari Chao	LPZ-ITU-SBV-SSR-02-S1-P1a			0.5				0.5
Feliciano Medina Chamaro	LPZ-ITU-SBV-TUM-025-S2-P2				1.0			1.0
Felipa Alanoca Huaycho	LPZ-ITU-SBV-HUR-46-S1-P1				1.0			1.0
	LPZ-ITU-SBV-HUR-46-S2-P2			1.0				1.0
	LPZ-ITU-SBV-HUR-46-S2-P3			0.2				0.2
Felix Condori Parapo	LPZ-ITU-SBV-STA-067-S1-P1			1.0				1.0
	LPZ-ITU-SBV-STA-067-S1-P2					0.5		0.5
Felix Mamio Guamona	LPZ-ITU-SBV-BAT-01-S1-P1			1.0				1.0
	LPZ-ITU-SBV-BAT-01-S2-P2			1.0				1.0
Flora Miranda Canaviri	LPZ-ITU-SBV-CLD-001-S1-P1				1.0			1.0
Genaro Portal Ortega	LPZ-ITU-SBV-CIN-04-S1-P1a			0.6				0.6
	LPZ-ITU-SBV-CIN-04-S1-P1Bs			0.1				0.1
German Martinez Torrez	LPZ-ITU-SBV-SBP-002-S3-P3			1.0				1.0
Gregorio Alcaraz O	LPZ-ITU-SBV-25M-0003-S1-P1				1.0			1.0
Gumercindo Porco Collque	LPZ-ITU-SBV-HUR-02-S1-P1				1.0			1.0
Humberto Leal Terrazas	LPZ-ITU-SBV-BNT-017-S4-P3							
Isabel Tarifa Gallardo de Rivero	LPZ-ITU-SBV-25M-08-S2-P1			0.5				0.5
	LPZ-ITU-SBV-25M-08-S2-P2			0.5				0.5
	LPZ-ITU-SBV-25M-08-S2-P3				0.5			0.5
Isidora Cano Carlos	LPZ-ITU-SBV-25M-004-S1-P1a				0.7			0.7
Jaime Duval Queteguari	LPZ-ITU-SBV-BNT-19-S1-P1			2.0				2.0
Juan Beyuma Chao	LPZ-ITU-SBV-TUM-10-S1-P1				0.5			0.5
	LPZ-ITU-SBV-TUM-10-S1-P2	0.3						0.3
Juan Carlos Guizada Rios	LPZ-ITU-SBV-EVE-011-S1-P1a						0.4	0.4
	LPZ-ITU-SBV-EVE-011-S1-P2	0.5						0.5
Juan Garcia Anabamba	LPZ-ITU-SBV-SBP-37-VS1-PV1			0.5				0.5
	LPZ-ITU-SBV-SBP-37-VS2-PV2			0.5				0.5
Justo Carmona Padilla	LPZ-ITU-SBV-25M-19-S1-P1			1.0				1.0
Leonardo Ojeda Cori	LPZ-ITU-SBV-LEM-7-SL1-PL1				0.5			0.5
	LPZ-ITU-SBV-LEM-7-SL2-PL2a				0.3			0.3
Lorenzo Chau Quenebo	LPZ-ITU-SBV-COP-04-S1-P1			1.0				1.0
Luis Cartagena Mamio	LPZ-ITU-SBV-COP-03-S1-P1	1.0						1.0
Macario Vilca Poma	LPZ-ITU-SBV-TUM-003-S1-P1			1.0				1.0
Marcelino Churqui Juaniquina	LPZ-ITU-SBV-HUR-36-S1-P1				1.5			1.5
Marcelo Nahui Ilimuri	LPZ-ITU-SBV-SID-37-S1-P1	0.5						0.5
	LPZ-ITU-SBV-SID-37-S1-P2	0.5						0.5
Mariol Fessy Gonzales	LPZ-ITU-SBV-SBP-06-S1-P1			0.2				0.2
	LPZ-ITU-SBV-SBP-06-S1-P2			0.2				0.2
	LPZ-ITU-SBV-SBP-06-S1-P3				0.2			0.2
	LPZ-ITU-SBV-SBP-06-S2-P4	1.0						1.0
Martha Huarachi Ramos	LPZ-ITU-SBV-STA-065-S1-P1				0.5			0.5
	LPZ-ITU-SBV-STA-065-S1-P2			0.5				0.5
Martin Laura Mamani	LPZ-ITU-SBV-SBP-004-S1-P1			1.0				1.0
Maximiliana Emma Pacha Velasco	LPZ-ITU-SBV-SID-48-S1-P1			1.0				1.0
Natalia Ticona De Chamizo	LPZ-ITU-SBV-SBP-022-S1-P1				5.0			5.0
Nelo Luis Quenevo Macuapa	LPZ-ITU-SBV-SSR-004-S1-P1				1.0			1.0
	LPZ-ITU-SBV-SSR-004-S2-P2			0.5				0.5
Nestor Medina Gonzales	LPZ-ITU-SBV-TUM-13-S1-P1				0.6			0.6
Pascual Rivera Carvajal	LPZ-ITU-SBV-25M-0005-S1-P1a							
Patrocinio Revollo Mejia	LPZ-ITU-SBV-NPL-14-S1-P2				0.5			0.5
	LPZ-ITU-SBV-NPL-14-S1-P3	0.5						0.5
	LPZ-ITU-SBV-NPL-14-S2-P5			0.8				0.8
Pedro Benito Marupa Macuapa	LPZ-ITU-SBV-TUM-03-S1-P1a	0.8						0.8
	LPZ-ITU-SBV-TUM-03-S1-P1Bs	0.2						0.2
Petrona Chao Amutari	LPZ-ITU-SBV-SBP-05-S1-P1				1.0			1.0
Quintin Ticona Yañez	LPZ-ITU-SBV-STA-066-S1-P1	1.0						1.0
Rolando Queteguari Ibguari	LPZ-ITU-SBV-SSR-001-S2-P2							
	LPZ-ITU-SBV-SSR-001-S2-P3							
Serafin Flores Garcia	LPZ-ITU-SBV-HUR-12-S1-P1					1.0		1.0
Vicenta Martinez Torrez Vda. de Avendaño	LPZ-ITU-SBV-HUR-08-S1-P2	0.5						0.5
	LPZ-ITU-SBV-HUR-08-S1-P3	0.5						0.5
Victor Severo Huanca Quispe	LPZ-ITU-SBV-HUR-8-S1-P1	0.5						0.5
	LPZ-ITU-SBV-HUR-8-S2-P2			0.5				0.5
	LPZ-ITU-SBV-HUR-8-S5-P3			0.5				0.5
Victoriano Rivera Almazan	LPZ-ITU-SBV-25M-32-S1-P1				0.5			0.5
	LPZ-ITU-SBV-25M-32-S1-P2				0.5			0.5
Total general		7.8	2.0	28.6	27.3	4.0	2.4	72.0

Results of Evaluation Visits: Fifth Visit  
(Normally 4 months after last visit, but this might differ a bit, depending on results of former visit)

Farmer	Sector_cod	Fifth Evaluation					Total 5
		Pest control	Weeding	Others	Pruning	Refalle	
Abel Cartagena Silva	LPZ-ITU-SBV-BAT-09-S1-PV2		0.5				0.5
Alcides Serato Alvarez	LPZ-ITU-SBV-BNT-51-S1-P1		1.0				1.0
Alfredo Ramos Anachuri	LPZ-ITU-SBV-CIN-13-S2-P1				1.0		1.0
Alfredo Senzano Agramont	LPZ-ITU-SBV-SBP-30-S1-P1		1.0				1.0
Alicia Escobar Queteguari	LPZ-ITU-SBV-SID-25-S1-P1					2.0	2.0
Andres Carmona Romero	LPZ-ITU-SBV-25M-03-S1-P1				1.1		1.1
Aquellina Valdez Chao	LPZ-ITU-SBV-TUM-14-S1-P1						
Benito Aruquipa Trujillo	LPZ-ITU-SBV-STA-07-S1-P1				2.0		2.0
	LPZ-ITU-SBV-STA-07-S2-P2			1.0			1.0
	LPZ-ITU-SBV-STA-07-S2-P3						
Benito Quispe Catunta	LPZ-ITU-SBV-HUR-04-S1-P1				1.0		1.0
	LPZ-ITU-SBV-HUR-04-S2-P2				0.5		0.5
Carlos Antonio Ybaguari Quenevo	LPZ-ITU-SBV-SSR-02-S1-P1				0.5		0.5
	LPZ-ITU-SBV-SSR-02-S1-P2				0.5		0.5
Carlos Virginio Martinez Cabeza	LPZ-ITU-SBV-25M-018-S1-P1				1.0		1.0
Domingo Cuajera Ortiz	LPZ-ITU-SBV-SID-44-S1-P1				1.0		1.0
Edgar Gonzales Callpa	LPZ-ITU-SBV-EVE-06-S1-P1						
Elias Valdez	LPZ-ITU-SBV-NPL-02-S1-P1		0.6				0.6
Eloy Miranda Canaviri	LPZ-ITU-SBV-CLD-00-S1-P1						
Elsa Ruiz Cespedes	LPZ-ITU-SBV-STA-50-S1-P1		1.0				1.0
Estanislao Amutari Queteguari	LPZ-ITU-SBV-SSR-11-S1-P1				0.5		0.5
	LPZ-ITU-SBV-SSR-11-S1-P2				0.5		0.5
Eulogio Rodriguez Ortega	LPZ-ITU-SBV-MAY-047-S1-P1		3.5				3.5
	LPZ-ITU-SBV-MAY-047-S2-P2				1.0		1.0
	LPZ-ITU-SBV-MAY-047-S2-P3		0.5				0.5
Evangelina Sejas De Peredo	LPZ-ITU-SBV-ESM-11-S1-P1a				0.4		0.4
	LPZ-ITU-SBV-ESM-11-S1-P2a				0.4		0.4
Felcy Amutari Chao	LPZ-ITU-SBV-SSR-02-S1-P1a		0.5				0.5
Feliciano Medina Chamaro	LPZ-ITU-SBV-TUM-025-S2-P2		1.0				1.0
Felipa Alanoca Huaycho	LPZ-ITU-SBV-HUR-46-S1-P1				1.0		1.0
	LPZ-ITU-SBV-HUR-46-S2-P2						
	LPZ-ITU-SBV-HUR-46-S2-P3		0.2				0.2
Felix Condori Parapo	LPZ-ITU-SBV-STA-067-S1-P1			1.0			1.0
	LPZ-ITU-SBV-STA-067-S1-P2				0.5		0.5
Felix Mamio Guamona	LPZ-ITU-SBV-BAT-01-S1-P1		1.0				1.0
	LPZ-ITU-SBV-BAT-01-S2-P2				1.0		1.0
Flora Miranda Canaviri	LPZ-ITU-SBV-CLD-001-S1-P1				1.0		1.0
Genaro Portal Ortega	LPZ-ITU-SBV-CIN-04-S1-P1a				0.6		0.6
	LPZ-ITU-SBV-CIN-04-S1-P1Bs			0.1			0.1
German Martinez Torrez	LPZ-ITU-SBV-SBP-002-S3-P3				1.0		1.0
Gregorio Alcaraz 0	LPZ-ITU-SBV-25M-0003-S1-P1				1.0		1.0
Gumercindo Porco Collque	LPZ-ITU-SBV-HUR-02-S1-P1		1.0				1.0
Humberto Leal Terrazas	LPZ-ITU-SBV-BNT-017-S4-P3						
Isabel Tarifa Gallardo de Rivero	LPZ-ITU-SBV-25M-08-S2-P1		0.5				0.5
	LPZ-ITU-SBV-25M-08-S2-P2				0.5		0.5
	LPZ-ITU-SBV-25M-08-S2-P3				0.5		0.5
Isidora Cano Carlos	LPZ-ITU-SBV-25M-004-S1-P1a				0.7		0.7
Jaime Duval Queteguari	LPZ-ITU-SBV-BNT-19-S1-P1		2.0				2.0
Juan Beyuma Chao	LPZ-ITU-SBV-TUM-10-S1-P1						
	LPZ-ITU-SBV-TUM-10-S1-P2						
Juan Carlos Guizada Rios	LPZ-ITU-SBV-EVE-011-S1-P1a		0.4				0.4
	LPZ-ITU-SBV-EVE-011-S1-P2		0.5				0.5
Juan Garcia Anabamba	LPZ-ITU-SBV-SBP-37-VS1-PV1		0.5				0.5
	LPZ-ITU-SBV-SBP-37-VS2-PV2		0.5				0.5
Justo Carmona Padilla	LPZ-ITU-SBV-25M-19-S1-P1				1.0		1.0
Leonardo Ojeda Cori	LPZ-ITU-SBV-LEM-7-S1-PL1				0.5		0.5
	LPZ-ITU-SBV-LEM-7-S1-PL2a		0.3				0.3
Lorenzo Chau Quenebo	LPZ-ITU-SBV-COP-04-S1-P1		1.0				1.0
Luis Cartagena Mamio	LPZ-ITU-SBV-COP-03-S1-P1				1.0		1.0
Macario Vilca Poma	LPZ-ITU-SBV-TUM-003-S1-P1						
Marcelino Churqui Juaniquina	LPZ-ITU-SBV-HUR-36-S1-P1		1.5				1.5
Marcelo Nahui Ilimuri	LPZ-ITU-SBV-SID-37-S1-P1				0.5		0.5
	LPZ-ITU-SBV-SID-37-S1-P2		0.5				0.5
Mariol Fessy Gonzales	LPZ-ITU-SBV-SBP-06-S1-P1		0.2				0.2
	LPZ-ITU-SBV-SBP-06-S1-P2		0.2				0.2
	LPZ-ITU-SBV-SBP-06-S1-P3		0.2				0.2
	LPZ-ITU-SBV-SBP-06-S2-P4		1.0				1.0
Martha Huarachi Ramos	LPZ-ITU-SBV-STA-065-S1-P1				0.5		0.5
	LPZ-ITU-SBV-STA-065-S1-P2		0.5				0.5
Martin Laura Mamani	LPZ-ITU-SBV-SBP-004-S1-P1		1.0				1.0
Maximiliana Emma Pacha Velasco	LPZ-ITU-SBV-SID-48-S1-P1				1.0		1.0
Natalia Ticona De Chamizo	LPZ-ITU-SBV-SBP-022-S1-P1		5.0				5.0
Nelo Luis Quenevo Macuapa	LPZ-ITU-SBV-SSR-004-S1-P1		1.0				1.0
	LPZ-ITU-SBV-SSR-004-S2-P2						
Nestor Medina Gonzales	LPZ-ITU-SBV-TUM-13-S1-P1						
Pascual Rivera Carvajal	LPZ-ITU-SBV-25M-0005-S1-P1a						
Patrocinio Revollo Mejia	LPZ-ITU-SBV-NPL-14-S1-P2				0.5		0.5
	LPZ-ITU-SBV-NPL-14-S1-P3		0.5				0.5
	LPZ-ITU-SBV-NPL-14-S2-P5						
Pedro Benito Marupa Macuapa	LPZ-ITU-SBV-TUM-03-S1-P1a						
	LPZ-ITU-SBV-TUM-03-S1-P1Bs						
Petrona Chao Amutari	LPZ-ITU-SBV-SBP-05-S1-P1						
Quintin Ticona Yañez	LPZ-ITU-SBV-STA-066-S1-P1				1.0		1.0
Rolando Queteguari Ibguari	LPZ-ITU-SBV-SSR-001-S2-P2						
	LPZ-ITU-SBV-SSR-001-S2-P3						
Serafin Flores Garcia	LPZ-ITU-SBV-HUR-12-S1-P1		1.0				1.0
Vicenta Martinez Torrez Vda. de Avendaño	LPZ-ITU-SBV-HUR-08-S1-P2		0.5				0.5
	LPZ-ITU-SBV-HUR-08-S1-P3		0.5				0.5
Victor Severo Huanca Quispe	LPZ-ITU-SBV-HUR-8-S1-P1						
	LPZ-ITU-SBV-HUR-8-S2-P2						
	LPZ-ITU-SBV-HUR-8-S5-P3						
Victoriano Rivera Almazan	LPZ-ITU-SBV-25M-32-S1-P1				0.5		0.5
	LPZ-ITU-SBV-25M-32-S1-P2				0.5		0.5
Total general		10.4	20.7	2.1	26.2	2.0	61.4

## Results of Evaluation Visits: Sixth Visit

(Normally 5 months after last visit, but this might differ a bit, depending on results of former visit)

Farmer	Sector_cod	Sixth Evaluation				Total 6
		Pest control	Weeding	Others	Pruning	
Abel Cartagena Silva	LPZ-ITU-SBV-BAT-09-S1-PV2					
Alcides Serato Alvarez	LPZ-ITU-SBV-BNT-51-S1-P1					
Alfredo Ramos Anachuri	LPZ-ITU-SBV-CIN-13-S2-P1					
Alfredo Senzano Agramont	LPZ-ITU-SBV-SBP-30-S1-P1				1.0	1.0
Alicia Escobar Queteguari	LPZ-ITU-SBV-SID-25-S1-P1				2.0	2.0
Andres Carmona Romero	LPZ-ITU-SBV-25M-03-S1-P1				1.1	1.1
Aquelina Valdez Chao	LPZ-ITU-SBV-TUM-14-S1-P1					
Benito Aruquipa Trujillo	LPZ-ITU-SBV-STA-07-S1-P1				2.0	2.0
	LPZ-ITU-SBV-STA-07-S2-P2					
	LPZ-ITU-SBV-STA-07-S2-P3					
Benito Quispe Catunta	LPZ-ITU-SBV-HUR-04-S1-P1				1.0	1.0
	LPZ-ITU-SBV-HUR-04-S2-P2		0.5			0.5
Carlos Antonio Ybarguari Quenevo	LPZ-ITU-SBV-SSR-02-S1-P1				0.5	0.5
	LPZ-ITU-SBV-SSR-02-S1-P2				0.5	0.5
Carlos Virginio Martinez Cabeza	LPZ-ITU-SBV-25M-018-S1-P1		1.0			1.0
Domingo Cuajera Ortiz	LPZ-ITU-SBV-SID-44-S1-P1				1.0	1.0
Edgar Gonzales Callpa	LPZ-ITU-SBV-EVE-06-S1-P1					
Elias Valdez	LPZ-ITU-SBV-NPL-02-S1-P1					
Eloy Miranda Canaviri	LPZ-ITU-SBV-CLD-00-S1-P1					
Elsa Ruiz Cespedes	LPZ-ITU-SBV-STA-50-S1-P1					
Estanislao Amutari Queteguari	LPZ-ITU-SBV-SSR-11-S1-P1					
	LPZ-ITU-SBV-SSR-11-S1-P2					
Eulogio Rodriguez Ortega	LPZ-ITU-SBV-MAY-047-S1-P1				3.5	3.5
	LPZ-ITU-SBV-MAY-047-S2-P2				1.0	1.0
	LPZ-ITU-SBV-MAY-047-S2-P3		0.5			0.5
Evangelina Sejas De Peredo	LPZ-ITU-SBV-ESM-11-S1-P1a		0.4			0.4
	LPZ-ITU-SBV-ESM-11-S1-P2a		0.4			0.4
Felcy Amutari Chao	LPZ-ITU-SBV-SSR-02-S1-P1a					
Feliciano Medina Chamaro	LPZ-ITU-SBV-TUM-025-S2-P2					
Felipa Alanoca Huaycho	LPZ-ITU-SBV-HUR-46-S1-P1		1.0			1.0
	LPZ-ITU-SBV-HUR-46-S2-P2					
	LPZ-ITU-SBV-HUR-46-S2-P3					
Felix Condori Parapo	LPZ-ITU-SBV-STA-067-S1-P1					
	LPZ-ITU-SBV-STA-067-S1-P2					
Felix Mamio Guamona	LPZ-ITU-SBV-BAT-01-S1-P1					
	LPZ-ITU-SBV-BAT-01-S2-P2					
Flora Miranda Canaviri	LPZ-ITU-SBV-CLD-001-S1-P1		1.0			1.0
Genaro Portal Ortega	LPZ-ITU-SBV-CIN-04-S1-P1a		0.6			0.6
	LPZ-ITU-SBV-CIN-04-S1-P18s			0.1		0.1
German Martinez Torrez	LPZ-ITU-SBV-SSB-002-S3-P3				1.0	1.0
Gregorio Alcaraz O	LPZ-ITU-SBV-25M-0003-S1-P1					
Gumerindo Porco Collque	LPZ-ITU-SBV-HUR-02-S1-P1		1.0			1.0
Humberto Leal Terrazas	LPZ-ITU-SBV-BNT-017-S4-P3					
Isabel Tarifa Gallardo de Rivero	LPZ-ITU-SBV-25M-08-S2-P1		0.5			0.5
	LPZ-ITU-SBV-25M-08-S2-P2		0.5			0.5
	LPZ-ITU-SBV-25M-08-S2-P3					
Isidora Cano Carlos	LPZ-ITU-SBV-25M-004-S1-P1a				0.7	0.7
Jaime Duval Quetehuari	LPZ-ITU-SBV-BNT-19-S1-P1		2.0			2.0
Juan Beyuma Chao	LPZ-ITU-SBV-TUM-10-S1-P1					
	LPZ-ITU-SBV-TUM-10-S1-P2					
Juan Carlos Guizada Rios	LPZ-ITU-SBV-EVE-011-S1-P1a					
	LPZ-ITU-SBV-EVE-011-S1-P2					
Juan Garcia Anabamba	LPZ-ITU-SBV-SBP-37-VS1-PV1					
	LPZ-ITU-SBV-SBP-37-VS2-PV2					
Justo Carmona Padilla	LPZ-ITU-SBV-25M-19-S1-P1		1.0			1.0
Leonardo Ojeda Cori	LPZ-ITU-SBV-LEM-7-SL1-PL1				0.5	0.5
	LPZ-ITU-SBV-LEM-7-SL2-PL2a				0.3	0.3
Lorenzo Chau Quenebo	LPZ-ITU-SBV-COP-04-S1-P1		1.0			1.0
Luis Cartagena Mamio	LPZ-ITU-SBV-COP-03-S1-P1					
Macario Vilca Poma	LPZ-ITU-SBV-TUM-003-S1-P1					
Marcelino Churqui Juaniquina	LPZ-ITU-SBV-HUR-36-S1-P1				1.5	1.5
Marcelo Nahui Ilimuri	LPZ-ITU-SBV-SID-37-S1-P1		0.5			0.5
	LPZ-ITU-SBV-SID-37-S1-P2		0.5			0.5
Mariol Fessy Gonzales	LPZ-ITU-SBV-SBP-06-S1-P1	0.2				0.2
	LPZ-ITU-SBV-SBP-06-S1-P2		0.2			0.2
	LPZ-ITU-SBV-SBP-06-S1-P3				0.2	0.2
	LPZ-ITU-SBV-SBP-06-S2-P4					
Martha Huarachi Ramos	LPZ-ITU-SBV-STA-065-S1-P1					
	LPZ-ITU-SBV-STA-065-S1-P2					
Martin Laura Mamani	LPZ-ITU-SBV-SBP-004-S1-P1					
Maximiliana Emma Pacha Velasco	LPZ-ITU-SBV-SID-48-S1-P1		1.0			1.0
Natalia Ticona De Chamizo	LPZ-ITU-SBV-SBP-022-S1-P1					
Nelo Luis Quenevo Macuapa	LPZ-ITU-SBV-SSR-004-S1-P1			1.0		1.0
	LPZ-ITU-SBV-SSR-004-S2-P2					
Nestor Medina Gonzales	LPZ-ITU-SBV-TUM-13-S1-P1					
Pascual Rivera Carvajal	LPZ-ITU-SBV-25M-0005-S1-P1a					
Patrocinio Revollo Mejia	LPZ-ITU-SBV-NPL-14-S1-P2				0.5	0.5
	LPZ-ITU-SBV-NPL-14-S1-P3				0.5	0.5
	LPZ-ITU-SBV-NPL-14-S2-P5					
Pedro Benito Marupa Macuapa	LPZ-ITU-SBV-TUM-03-S1-P1a					
	LPZ-ITU-SBV-TUM-03-S1-P1Bs					
Petrona Chao Amutari	LPZ-ITU-SBV-SBP-05-S1-P1					
Quintín Ticona Yañez	LPZ-ITU-SBV-STA-066-S1-P1		1.0			1.0
Rolando Queteguari Ibguari	LPZ-ITU-SBV-SSR-001-S2-P2					
	LPZ-ITU-SBV-SSR-001-S2-P3					
Serafin Flores Garcia	LPZ-ITU-SBV-HUR-12-S1-P1		1.0			1.0
Vicenta Martinez Torrez Vda. de Avendaño	LPZ-ITU-SBV-HUR-08-S1-P2	0.5				0.5
	LPZ-ITU-SBV-HUR-08-S1-P3					
Victor Severo Huanca Quispe	LPZ-ITU-SBV-HUR-8-S1-P1					
	LPZ-ITU-SBV-HUR-8-S2-P2					
	LPZ-ITU-SBV-HUR-8-S5-P3					
Victoriano Rivera Almazan	LPZ-ITU-SBV-25M-32-S1-P1				0.5	0.5
	LPZ-ITU-SBV-25M-32-S1-P2				0.5	0.5
Total general		1.7	14.6	1.1	19.8	37.2



Results of Evaluation Visits: Seventh Visit

(Normally 5 months after last visit, but this might differ a bit, depending on results of former visit)

Farmer	Sector_cod	Seventh Evaluation			
		Pest control	Weeding	Pruning	Total 7
Abel Cartagena Silva	LPZ-ITU-SBV-BAT-09-S1-PV2				
Alcides Serato Alvarez	LPZ-ITU-SBV-BNT-51-S1-P1				
Alfredo Ramos Anachuri	LPZ-ITU-SBV-CIN-13-S2-P1				
Alfredo Senzano Agramont	LPZ-ITU-SBV-SBP-30-S1-P1				
Alicia Escobar Queteguari	LPZ-ITU-SBV-SID-25-S1-P1				
Andres Carmona Romero	LPZ-ITU-SBV-25M-03-S1-P1				
Aquelina Valdez Chao	LPZ-ITU-SBV-TUM-14-S1-P1				
Benito Aruquipa Trujillo	LPZ-ITU-SBV-STA-07-S1-P1				
	LPZ-ITU-SBV-STA-07-S2-P2				
	LPZ-ITU-SBV-STA-07-S2-P3				
Benito Quispe Catunta	LPZ-ITU-SBV-HUR-04-S1-P1			1.0	1.0
	LPZ-ITU-SBV-HUR-04-S2-P2				
Carlos Antonio Ybarguari Quenevo	LPZ-ITU-SBV-SSR-02-S1-P1			0.5	0.5
	LPZ-ITU-SBV-SSR-02-S1-P2		0.5		0.5
Carlos Virginio Martinez Cabeza	LPZ-ITU-SBV-25M-018-S1-P1		1.0		1.0
Domingo Cujajera Ortiz	LPZ-ITU-SBV-SID-44-S1-P1			1.0	1.0
Edgar Gonzales Callpa	LPZ-ITU-SBV-EVE-06-S1-P1				
Elias Valdez	LPZ-ITU-SBV-NPL-02-S1-P1				
Eloy Miranda Canaviri	LPZ-ITU-SBV-CLD-00-S1-P1				
Elsa Ruiz Cespedes	LPZ-ITU-SBV-STA-50-S1-P1				
Estanislao Amutari Queteguari	LPZ-ITU-SBV-SSR-11-S1-P1				
	LPZ-ITU-SBV-SSR-11-S1-P2				
Eulogio Rodriguez Ortega	LPZ-ITU-SBV-MAY-047-S1-P1		3.5		3.5
	LPZ-ITU-SBV-MAY-047-S2-P2				
	LPZ-ITU-SBV-MAY-047-S2-P3				
Evangelina Sejas De Peredo	LPZ-ITU-SBV-ESM-11-S1-P1a			0.4	0.4
	LPZ-ITU-SBV-ESM-11-S1-P2a			0.4	0.4
Felcy Amutari Chao	LPZ-ITU-SBV-SSR-02-S1-P1a				
Feliciano Medina Chamaro	LPZ-ITU-SBV-TUM-025-S2-P2				
Felipa Alanoca Huaycho	LPZ-ITU-SBV-HUR-46-S1-P1				
	LPZ-ITU-SBV-HUR-46-S2-P2				
	LPZ-ITU-SBV-HUR-46-S2-P3				
Felix Condori Parapo	LPZ-ITU-SBV-STA-067-S1-P1				
	LPZ-ITU-SBV-STA-067-S1-P2				
Felix Mamio Guamona	LPZ-ITU-SBV-BAT-01-S1-P1				
	LPZ-ITU-SBV-BAT-01-S2-P2				
Flora Miranda Canaviri	LPZ-ITU-SBV-CLD-001-S1-P1				
Genaro Portal Ortega	LPZ-ITU-SBV-CIN-04-S1-P1a				
	LPZ-ITU-SBV-CIN-04-S1-P1Bs				
German Martinez Torrez	LPZ-ITU-SBV-SBP-002-S3-P3		1.0		1.0
Gregorio Alcaraz O	LPZ-ITU-SBV-25M-0003-S1-P1				
Gumercindo Porco Collque	LPZ-ITU-SBV-HUR-02-S1-P1				
Humberto Leal Terrazas	LPZ-ITU-SBV-BNT-017-S4-P3				
Isabel Tarifa Gallardo de Rivero	LPZ-ITU-SBV-25M-08-S2-P1				
	LPZ-ITU-SBV-25M-08-S2-P2				
	LPZ-ITU-SBV-25M-08-S2-P3				
Isidora Cano Carlos	LPZ-ITU-SBV-25M-004-S1-P1a				
Jaime Duval Quetehuari	LPZ-ITU-SBV-BNT-19-S1-P1				
Juan Beyuma Chao	LPZ-ITU-SBV-TUM-10-S1-P1				
	LPZ-ITU-SBV-TUM-10-S1-P2				
Juan Carlos Guizada Rios	LPZ-ITU-SBV-EVE-011-S1-P1a				
	LPZ-ITU-SBV-EVE-011-S1-P2				
Juan Garcia Anabamba	LPZ-ITU-SBV-SBP-37-VS1-PV1				
	LPZ-ITU-SBV-SBP-37-VS2-PV2				
Justo Carmona Padilla	LPZ-ITU-SBV-25M-19-S1-P1			1.0	1.0
Leonardo Ojeda Cori	LPZ-ITU-SBV-LEM-7-SL1-PL1				
	LPZ-ITU-SBV-LEM-7-SL2-PL2a				
Lorenzo Chau Quenebo	LPZ-ITU-SBV-COP-04-S1-P1			1.0	1.0
Luis Cartagena Mamio	LPZ-ITU-SBV-COP-03-S1-P1				
Macario Vilca Poma	LPZ-ITU-SBV-TUM-003-S1-P1				
Marcelino Churqui Juaniquina	LPZ-ITU-SBV-HUR-36-S1-P1	1.5			1.5
Marcelo Nahui Ilimuri	LPZ-ITU-SBV-SID-37-S1-P1				
	LPZ-ITU-SBV-SID-37-S1-P2		0.5		0.5
Mariol Fessy Gonzales	LPZ-ITU-SBV-SBP-06-S1-P1				
	LPZ-ITU-SBV-SBP-06-S1-P2				
	LPZ-ITU-SBV-SBP-06-S1-P3				
	LPZ-ITU-SBV-SBP-06-S2-P4				
Martha Huarachi Ramos	LPZ-ITU-SBV-STA-065-S1-P1				
	LPZ-ITU-SBV-STA-065-S1-P2				
Martin Laura Mamani	LPZ-ITU-SBV-SBP-004-S1-P1				
Maximiliana Emma Pacha Velasco	LPZ-ITU-SBV-SID-48-S1-P1				
Natalia Ticona De Chamizo	LPZ-ITU-SBV-SBP-022-S1-P1				
Nelo Luis Quenevo Macuapa	LPZ-ITU-SBV-SSR-004-S1-P1				
	LPZ-ITU-SBV-SSR-004-S2-P2				
Nestor Medina Gonzales	LPZ-ITU-SBV-TUM-13-S1-P1				
Pascual Rivera Carvajal	LPZ-ITU-SBV-25M-0005-S1-P1a				
Patrocinio Revollo Mejia	LPZ-ITU-SBV-NPL-14-S1-P2				
	LPZ-ITU-SBV-NPL-14-S1-P3				
	LPZ-ITU-SBV-NPL-14-S2-P5				
Pedro Benito Marupa Macuapa	LPZ-ITU-SBV-TUM-03-S1-P1a				
	LPZ-ITU-SBV-TUM-03-S1-P1Bs				
Petrona Chao Amutari	LPZ-ITU-SBV-SBP-05-S1-P1				
Quintin Ticona Yañez	LPZ-ITU-SBV-STA-066-S1-P1				
Rolando Queteguari Ibguari	LPZ-ITU-SBV-SSR-001-S2-P2				
	LPZ-ITU-SBV-SSR-001-S2-P3				
Serafin Flores Garcia	LPZ-ITU-SBV-HUR-12-S1-P1		1.0		1.0
Vicenta Martinez Torrez Vda. de Avendaño	LPZ-ITU-SBV-HUR-08-S1-P2				
	LPZ-ITU-SBV-HUR-08-S1-P3				
Victor Severo Huanca Quispe	LPZ-ITU-SBV-HUR-8-S1-P1				
	LPZ-ITU-SBV-HUR-8-S2-P2				
	LPZ-ITU-SBV-HUR-8-S5-P3				
Victoriano Rivera Almazan	LPZ-ITU-SBV-25M-32-S1-P1		0.5		0.5
	LPZ-ITU-SBV-25M-32-S1-P2		0.5		0.5
Total general		1.5	8.5	5.3	15.3